



Saeco *Atlantide*

The new standard of design and functionality.

Ideas with Passion





Saeco Atlante A great choice in every respect.



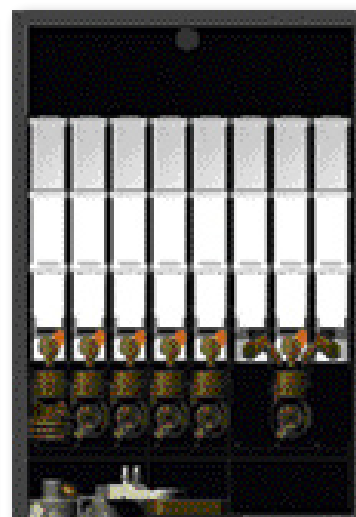
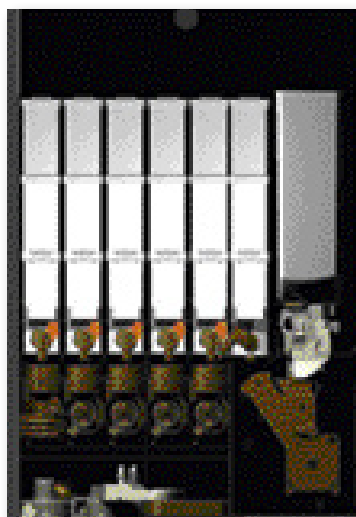
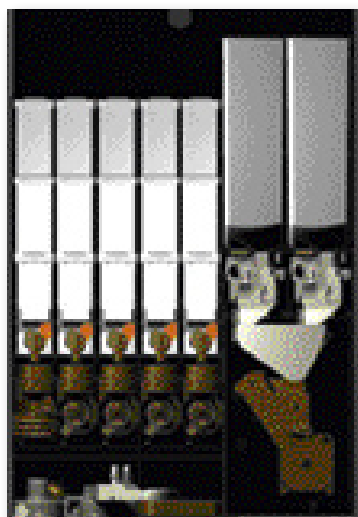
The Saeco Atlante is the new and standard-setting generation of free-standing vending machines for hot beverages – stunningly impressive from every angle. Its innovative U-Profile design with soft and elegant lines adds style to every room.

Along with its generous capacity (up to 700 cups), superb choice (up to 60 different products) and supreme convenience thanks to the revolutionary Saeco Rotating Plate System this vending wonder is perfect for medium and large locations.

Atlante creates a perfect coffee corner for any context, stand-alone or combined with a snack & food machine, and offers a complete solution for Vending. Available in Espresso with double grinder and double boiler, Espresso with one grinder and double boiler, and Instant versions.

Main features

- Saeco Brewing Group with Saeco Pre-Heating System for excellent espresso
- Generous container capacity
- Easy cleaning and maintenance thanks to the new Saeco Rotating Plate System
- Aesthetic and easily customizable U-Profile design with illuminated front
- User-friendly interface with LCD graphic display and easy-to-read and illuminated mechanical buttons
- Versatile dispensing area allowing cups with sizes up to 20 oz
- Predisposition to fit new powder-dispensing system
- Water filter for preventing the formation of limestone
- The machine is designed for easy use even by persons with disabilities



| Technical data | Atlante Espresso with double grinder and double boiler | Atlante Espresso with single grinder and double boiler | Atlante Instant |
|---------------------------|--|--|--|
| Dimensions (w x h x d) | 750 x 1830 x 865 mm | 750 x 1830 x 865 mm | 750 x 1830 x 865 mm |
| Weight | 192 kg | 189 kg | 168 kg |
| Power supply | 230 V/50 Hz | 230 V/50 Hz | 230 V/50 Hz |
| Power consumption | 2300 W | 2300 W | 2300 W |
| Boiler | 2 | 2 | 1 |
| Espresso boiler | brass (600 cc) | brass (600 cc) | |
| Instant boiler | stainless steel (4.5 l) | stainless steel (4.5 l) | stainless steel (4.5 l) |
| Water connection | 3/4" (1 – 8 bar) | 3/4" (1 – 8 bar) | 3/4" (1 – 8 bar) |
| Water supply | Standard: Optional: | Standard: Optional: | Standard: Optional: |
| | water supply independent water tank kit | water supply independent water tank kit | water supply independent water tank kit |
| Coffee bean container | 2 | 1 | |
| Instant product container | 5 | 6 | 7 |
| Sugar container | 1 | 1 | 1 |
| Disc mixer | 4 | 4 | 5 |
| Spiral mixer | 1 | 1 | 1 |
| Brewing unit | 7 g or 9 g | 7 g or 9 g | |
| Cups | 70 or 73 mm | 70 or 73 mm | 70 or 73 mm |
| Stirrers | 90 – 105 – 115 mm | 90 – 105 – 115 mm | 90 – 105 – 115 mm |
| Number of selection | 20 | 20 | 20 |
| Number of preselection | 2 | 2 | 2 |
| Coffee beans | 2 x 3.5 kg | 1 x 4.2 kg | |
| Instant coffee | 1.2 kg | 1.2 kg | 1.2 kg |
| Milk | 1.3 kg | 1.3 kg | 1.3 kg |
| Chocolate | 3.5 kg | 3.5 kg | 3.5 kg |
| Tea | 4.0 kg | 4.0 kg | 4.0 kg |
| Sugar | 4.5 kg | 4.5 kg | 3.0 kg |
| Cups (h 70 mm) | 700 | 700 | 700 |
| Stirrers | 550 | 550 | 550 |
| Independent water tank | 2 x 20 l | 2 x 20 l | 2 x 20 l |

Completely **equipped** with **elegance**



Illuminated
front

The Saeco Atlante design fits perfectly everywhere - thanks to its easily customizable and illuminated front.

LCD graphic display and illuminated 20 mechanical buttons with large labels make sure that every selection is made smoothly and conveniently.



User-friendly
interface



Versatile
dispensing area

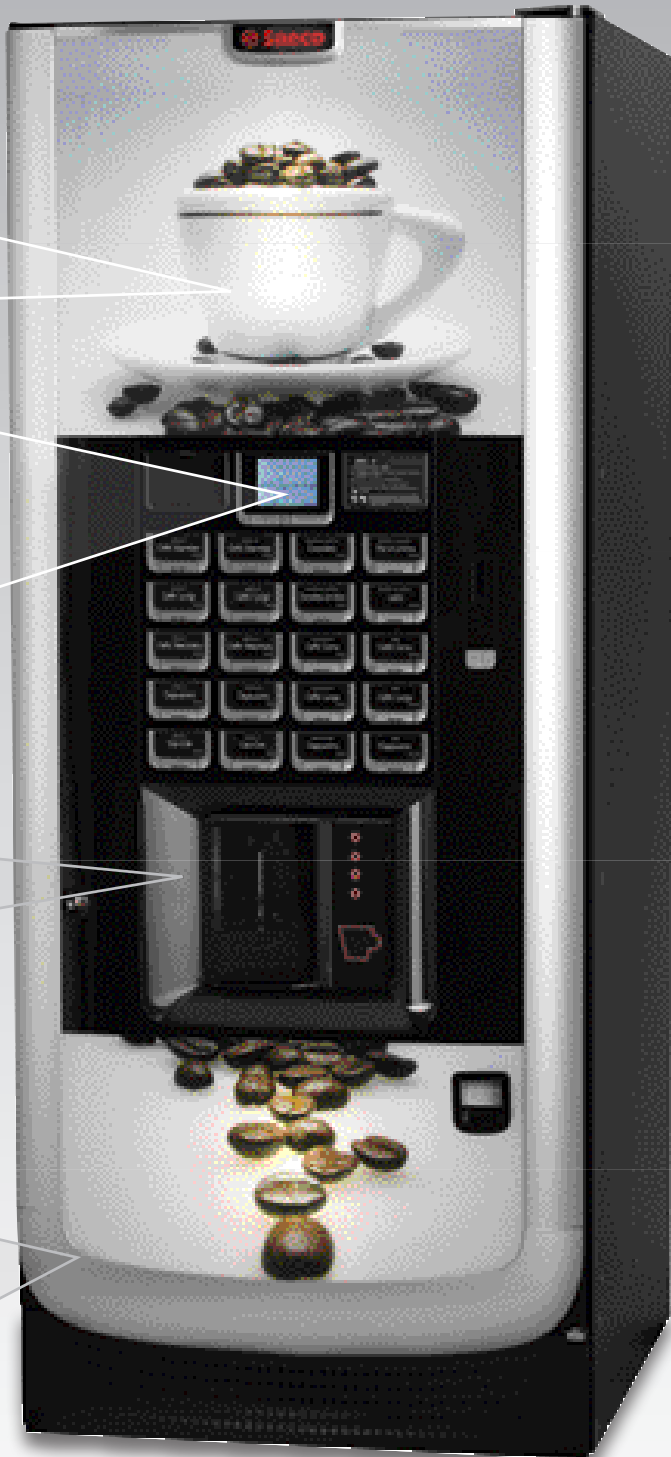
For even more variety the versatile dispensing area accepts cups of up to 20 oz.

Innovative, elegant, classy: the new U-Profile design with its soft lines is the stylish counterpart to the technology waiting behind it.



U-Profile

and functionality.



Technical specifications

- Pre-galvanized and painted steel-sheet body
- Containers and tanks in food-contact approved resin
- Saeco Rotating Plate System
- Rielta lock
- Refill signal for water, coffee and cups
- Adjustable stirrer dispenser
- Electronically controlled boilers temperature
- Exhauster to absorb internal moisture and additional steam exhauster for the dispensing area
- Illuminated keypad, logo and promotional images
- Removable cup-releasing device for easy cleaning and checking
- 60 W electromagnetic vibration pump
- Anti-overflow air-break device
- Simplified error reset
- Built-in utility outlet
- Boiler safety valve
- General safety relay for 24 V components
- Thermal cut-outs on all devices supplied with line voltage
- Safety and anti-boiling thermostats for instant products (Instant and double boiler versions)
- CE and VDE (Espresso version) approved

Accessories

- Independent water tank kit
- Mixer kit for tea replacement with soluble mixer
- Hot water solenoid valve kit
- Memory key to copy and quickly transfer machine settings
- USB key kit
- Eva-Dts 6.0 kit



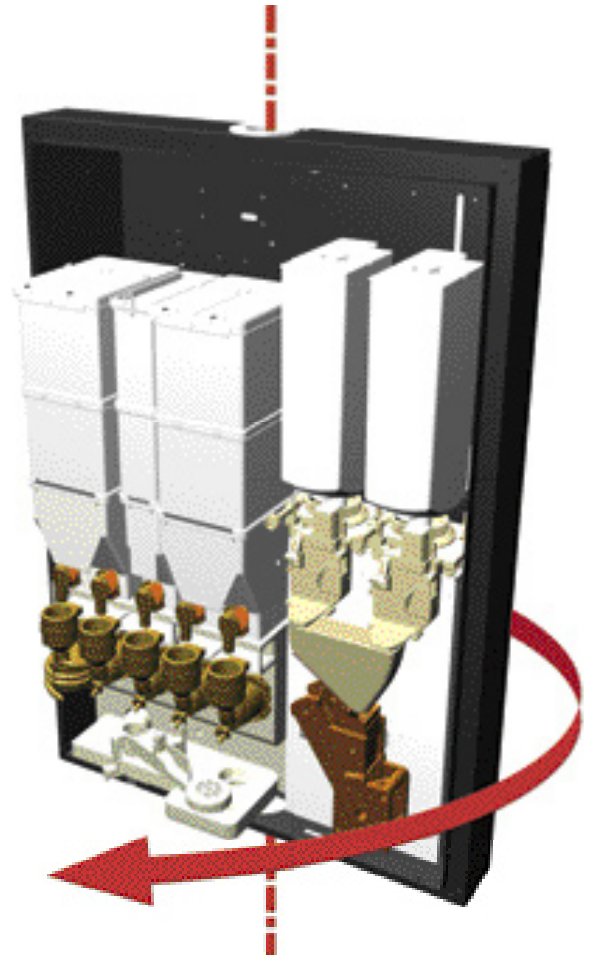
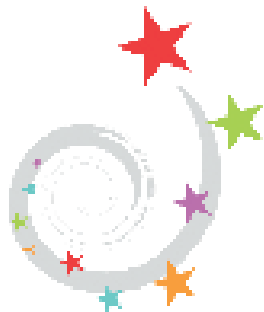
The **Saeco** Rotating Plate System.

A vending revolution.

Maintenance has never been easier than with the Saeco Atlante - thanks to the integrated Saeco Rotating Plate System.

This groundbreaking innovation allows front access to the machine's main components without having to remove any of them (except the coffee dumps duct). The main component plate is simply turned by a full 180°. So all service operations are massively simplified - which saves resources, time and money.

Winner of the Innovation Trophy!



The perfect partner for your business.



Argentina

Saeco Argentina S.A.
Av. Donato Alvarez, 1660
C1416BTS Capital Federal
Buenos Aires
Tel: +54 1145885000
Fax: +54 1145818683
www.saeco-argentina.com.ar

Australia

Saeco International Group (Australia) Pty Ltd
256, Darebin Road
Fairfield Victoria 3078
Tel: +61 3 84864999
Fax: +61 3 84864998
www.saeco.com.au

Austria

Saeco Austria AG
Millennium Park, 1
6890 Lustenau
Tel: +43 5577 81380
Fax: +43 5577 813877
www.saeco.at

Benelux

Saeco Benelux S.P.R.L.
Parc Industriel
Rue Al'Trappe, 114
4432 Allebur
Tel: +32 4 2477979
Fax: +32 4 2473340
www.saeco.be

Brazil

Saeco do Brasil Comércio
de Equipamentos Ltda
Rua Dr. Fonseca Brasil, 318
Morumbi
CEP-05716-060 São Paulo - SP
Tel: +55 11 31869666
Fax: +55 11 31869654
www.saeco.com.br

Canada

Saeco Canada Ltée
8145 Boul. St. Laurent
Montréal - Québec H2P 2M1
Tel: +1 514 3855551
Fax: +1 514 3855555
www.saeco.ca

France

Saeco France SAS
Zac des Petits-Ruisseaux
15, Rue des Petits-Ruisseaux
91370 Verrieres Le Buisson
Tel: +33 1 69935970
Fax: +33 1 69935971
www.saeco.fr

Germany

Saeco GmbH
Hermann-Laur-Straße, 4
78253 Eigeltingen
Tel: +49 7774 505100
Fax: +49 7774 505297
www.saeco.de

Japan

Nihon Saeco K.K.
3rd Floor, Senko PD Center
1-2-30 Heiwajima, Ota-ku,
Tokyo 143-0006
Tel: +81 3 57679753
Fax: +81 3 57679754
www.saeco.com.jp

Netherlands

Saeco Nederland
Hoefzijde, 5
3961 Mx Wijk Bij Duurstede
Tel: +31 34 3596020
Fax: +31 34 3596021
saeco.nederland@saeco.be

EUROPE:

Austria
Benelux
France
Germany
Italy
Netherlands
Poland
Portugal
Spain
Switzerland

Poland

Saeco Polska sp. z o.o.
ul. Zeganska, 30a/5
04-713 Warszawa
Tel: +48 22 8120779
Fax: +48 22 6131660
www.saeco.com.pl

Portugal

Saeco Por Imp. Com. Ap. Electr., Lda
Rua Velha de Mandim, 288
4475-054 Barca - Maia
Tel: +351 22 9479310
Fax: +351 22 9443203
www.saeco.pt

Spain

Saeco Ibérica S.A.
Poligono Almeda
Sant Ferran, 34-36
08940 Comella de Llobregat
Barcelona
Tel: +34 93 4740017
Fax: +34 93 4740434
www.saeco-iberica.com

Switzerland

Saeco AG
Nordringstrasse, 9
4702 Oensingen
Tel: +41 62 3881020
Fax: +41 62 3881025
www.saeco.ch

USA

Saeco USA Inc.
7905 Cochran Road
Suite 100
Glenwillow - OH 44139
Tel: +1 440 5282000
Fax: +1 440 5429173
www.saeco-usa.com

Italy

Saeco Vending S.p.A.
Località Casona, 1066
40041 Gaggio Montano
Bologna
Tel: +39 0534 7741
Fax: +39 0534 774808
info.saecovending@saeco.com
www.saeco.com