

Low Profile Portion Control Grinder with 2 Hoppers

Features

Portion Control Grinder

- Just 8.6" (21.84 cm) wide and a low profile height of 17.5" (44.5cm).
- Professional grind provided by large 3.19" (8.1 cm) diameter burrs powered by quiet, low speed, high torque motor.
- Two hoppers allow for regular, decaf or specialty beans.
- Large, clear bean hoppers merchandise 3 lbs. (1.36 kg) each of fresh coffee beans.
- Easy access on back for grind weight adjustment.
- Three year warranty on grinding burrs.



LPG2E

(funnel sold separately)

Dimensions: 17.5"H x 8.6"W x 11"D
(44.5cm H x 21.84cm W x 27.94cm D)

For current specification sheets and other information, go to www.bunn.com.

Related Products

Precision Burrs

All BUNN grinders use precision burrs to cut (not crush) the coffee beans and deliver consistent grind distribution. BUNN burrs are rated at a Rockwell hardness of 66C, resulting in an exceptionally long burr life.

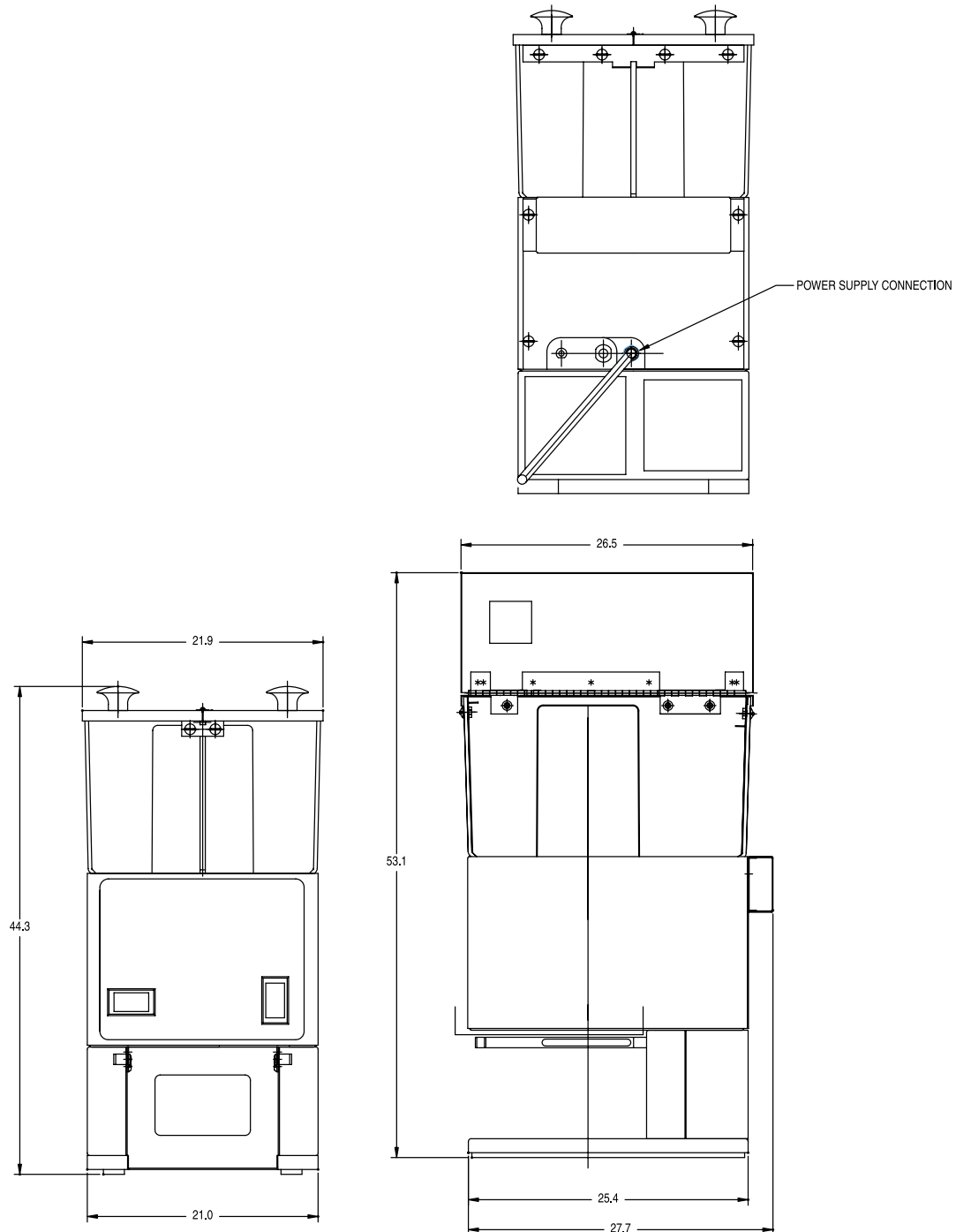


Dimensions & Specifications

| Model | Product # | Volts | Amps | Capacity | Shipping Weight | Cord Attached | Agency |
|---------|------------|-------|------|--|----------------------|---------------|--------|
| LPGA-2E | 26800.0004 | 230 | 3.5 | 3 lbs. for each hopper (1.36 kg per hopper) | 28 lbs. (12.7 kg) | Yes | CE |

Funnel sold separately.

Electrical: Model requires 2-wires plus ground service rated 220-240V, single phase, 50/60 Hz.



Bunn-O-Matic® Corporation - 1400 Stevenson Drive Springfield, Illinois 62703 • USA • +1-217-529-6601 • Fax +1-217-529-2827 • www.bunn.com

BUNN® practices continuous product research and improvement. We reserve the right to change specifications and product design without notice. Such revisions do not entitle the buyer to corresponding changes, improvements, additions or replacements for previously purchased equipment.

All dimensions shown in centimeters. Bunn-O-Matic Corporation owns all copyrights relating to materials in this publication. Please contact BUNN to request permission to reproduce any portion of this publication.