

Talea

Touch



Operation and maintenance manual

Before using the machine, please read the attached operating instructions.

Carefully read the safety rules

Mode d'emploi

Veuillez lire attentivement le mode d'emploi
(notamment les consignes de sécurité) avant d'utiliser l'appareil.



 **Saeco**



IMPORTANT SAFEGUARDS

When using electrical appliances, basic safety precautions should always be followed to reduce the risk of fire, electric shock, and/or injury to persons, including the following:

- 1 Read all instructions and information in this instruction book and any other literature included in this carton referring to this product before operating or using this appliance.
- 2 Do not touch hot surfaces. Use handles or knobs.
- 3 To protect against fire, electric shock and personal injury do not immerse cord, plugs or appliance in water or other liquid.
- 4 Close supervision is necessary when any appliance is used by or near children.
- 5 Unplug from outlet when not in use and before cleaning. Allow to cool before putting on or taking off parts, and before cleaning the appliance.
- 6 Do not operate any appliance with a damaged cord or plug or after the appliance malfunctions or has been damaged in any way. Return appliance to the nearest authorized service centre for examination, repair or adjustment.
- 7 The use of accessory attachments not recommended by the appliance manufacturer may result in fire, electric shock or personal injury.
- 8 Do not use outdoors.
- 9 Do not let cord hang over edge of table or counter, or touch hot surfaces.
- 10 Do not place on or near a hot gas or electric burner, or in a heated oven.
- 11 Always turn appliance **"OFF"**, then plug cord into the wall outlet. To disconnect, turn switch to **"OFF"**, then remove plug from wall outlet.
- 12 Do not use appliance for other than intended household use.
- 13 Use extreme caution when using hot steam.

SAVE THESE INSTRUCTIONS



CAUTION



This appliance is for household use only. Any servicing, other than cleaning and user maintenance, should be performed by an authorized service centre. Do not immerse machine in water. To reduce the risk of fire or electric shock, do not disassemble the machine. There are no user serviceable parts inside the machine serviceable by the user. Repair should be done by authorized service personnel only.

- 1 Check voltage to be sure that the voltage indicated on the nameplate corresponds with your voltage.
- 2 Never use warm or hot water to fill the water tank. Use cold water only.
- 3 Keep your hands and the cord away from hot parts of the appliance during operation.
- 4 Never clean with scrubbing powders or harsh cleaners. Simply use a soft cloth dampened with water.
- 5 For optimal taste of your coffee, use purified or bottled water. Periodic descaling is still recommended every 2-3 months.

INSTRUCTIONS FOR THE POWER SUPPLY CORD

- A A short power-supply cord is provided to reduce risks of tangling or tripping over a longer cord.
- B Longer extension cords are available and may be used if care is exercised in their use.
- C If a long extension cord is used:
 - 1 the marked electrical rating of the extension cord should be at least as great as the electrical rating of the appliance.
 - 2 if the appliance is of the grounded type, the extension cord should be a grounding type
 - 3 the cord should not hang from the table to avoid the risk of tangling or tripping.

GENERAL INFORMATION	3
APPLIANCE	4
ACCESSORIES	4
INSTALLATION	5
STARTING THE MACHINE	5
SETTING THE LANGUAGE.....	6
«AQUA PRIMA» WATER FILTER	7
DISPLAY	8
(OPTI-DOSE) INDICATES THE GROUND COFFEE QUANTITY	8
ADJUSTMENTS	9
COFFEE INTENSITY	9
ADJUSTING THE HEIGHT OF THE DRIP TRAY	9
COFFEE GRINDER ADJUSTMENT	9
PRODUCT DISPENSING	10
ESPRESSO / COFFEE / LONG COFFEE	10
DISPENSING BEVERAGES WITH PRE-GROUND COFFEE	11
HOT WATER DISPENSING.....	12
STEAM DISPENSING	13
CAPPUCCINO	14
MILK ISLAND (OPTIONAL)	15
BEVERAGE PROGRAMMING.....	16
BEVERAGE PROGRAMMING MENU	16
ESPRESSO / COFFEE / LONG COFFEE PROGRAMMING	17
PROGRAMMING THE MACHINE.....	18
<LANGUAGE & DISPLAY> «LANGUAGE» MENU	19
<LANGUAGE & DISPLAY> «CONTRAST» MENU	19
<ALERTS AND ACOUSTIC SETTINGS> «READY MACHINE» MENU	20
<ALERTS AND ACOUSTIC SETTINGS> «KEY TONE» MENU	20
«CUP-WARMING SURFACE» MENU.....	20
<WATER SETTINGS> «RINSE»	21
<WATER SETTINGS> «WATER FILTER» MENU.....	21
<WATER SETTINGS> «WATER HARDNESS» MENU.....	22
BEVERAGE SETTINGS	23
«PREBREWING» ADJUSTMENT.....	23
COFFEE TEMPERATURE ADJUSTMENT	24
«OPTI-DOSE» ADJUSTMENT FOR COFFEE BREWING.....	24
WATER QUANTITY ADJUSTMENT FOR COFFEE BREWING	24
TIME/DATE SETTINGS.....	25
SET CLOCK.....	25
DATE SETTINGS	26
STAND-BY SETTINGS.....	27
MACHINE ON/OFF	28
MAINTENANCE SETTINGS	30
<PRODUCT COUNT.> «TOTAL COUNT.» MENU	30
<PRODUCT COUNT.> «PARTIAL COUNT.» MENU	30
«CLEANING CYCLE» MENU	31
«BOILER DESCALING CYCLE» MENU	32
«LOCK DISPLAY» MENU.....	34
SPECIAL	35
FACTORY SETTINGS.....	35
CLEANING AND MAINTENANCE	36
GENERAL MACHINE CLEANING	36
CLEANING THE BREW GROUP	37
ERROR CODES.....	38
TECHNICAL DATA	39
SAFETY RULES.....	40

GENERAL INFORMATION

The coffee machine is suitable for preparing espresso coffee using coffee beans, and it is equipped with a device to dispense steam and hot water.

The machine is designed for domestic use only, and is not suitable for heavy or professional use.

Warning: no liability is assumed for any damage caused by:

- incorrect use not in accordance with the intended uses;
- repairs not carried out by authorized customer service centres;
- tampering with the power cable;
- tampering with any part of the machine;
- the use of non-original spare parts and accessories;
- failure to descale the machine or use at temperatures below 0°C (32°F)

IN THESE CASES, THE WARRANTY IS NOT VALID.



THE WARNING TRIANGLE INDICATES ALL IMPORTANT INSTRUCTIONS FOR THE USER'S SAFETY. PLEASE FOLLOW THESE INSTRUCTIONS CAREFULLY TO PREVENT SERIOUS INJURIES!

HOW TO USE THESE OPERATING INSTRUCTIONS.

Keep these operating instructions in a safe place and make them available to anyone else who may use the coffee machine. For further information or in case of problems, please refer to any authorized service centre.



ACCESSORIES



"Aqua Prima"
water filter



Ground coffee
measuring scoop



Water hardness tester



Cleaning brush



Grinder adjustment key



Power cable

STARTING THE MACHINE

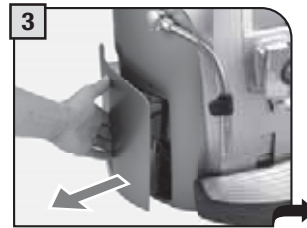
Make sure that the main power button is not pressed in the "ON" position.



1 Remove the coffee bean hopper cover.
Fill the hopper with coffee beans.



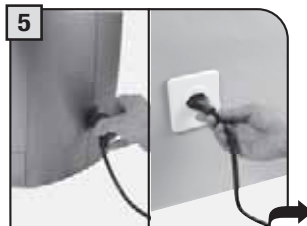
2 Close the cover pushing it down completely.



3 Remove the water tank. We recommend installing the "Aqua Prima" water filter (see page 7).



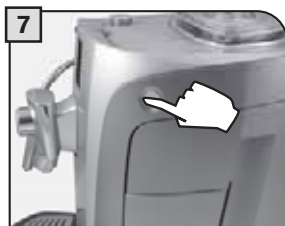
4 Fill the tank with fresh drinking water. Do not exceed the "max" level indicated on the water tank. Once filled place the tank back into the machine.



5 Attach the female end of the power cord to the machine. Insert the male end into the power outlet (see data tag).



6 Place a container beneath the hot water spout.



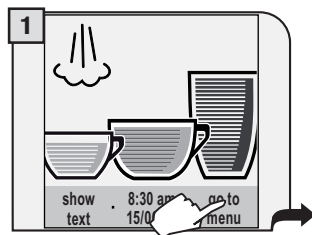
7 Press the main power button to the "ON" position.

When the right temperature is reached, the machine performs a priming and a rinse cycle of the internal circuits. A small quantity of water is dispensed. Wait for this cycle to be completed automatically. See page 21 to enable/disable the rinse function. The screen for product dispensing appears on the display; see page 8.

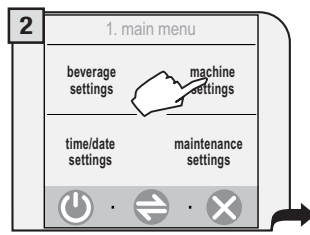
TO ASSESS WATER HARDNESS, SEE "WATER HARDNESS MENU" ON PAGE 22.

SETTING THE LANGUAGE

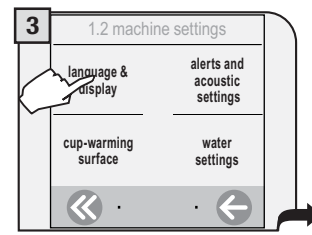
These settings allow you to regulate the machine's parameters to dispense coffee according to the typical parameters of the country where it is used. For this reason, the languages are also differentiated by location.



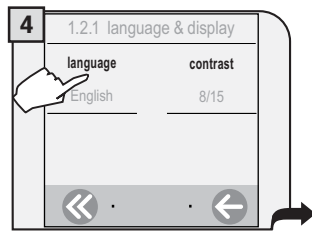
Press "go to menu".



Press "machine settings".




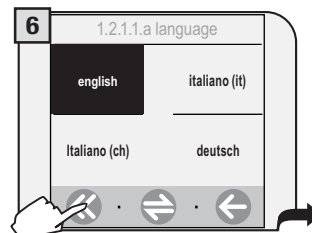
Press "language & display".



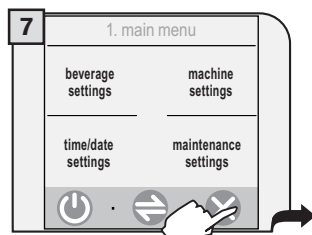
Press "language".



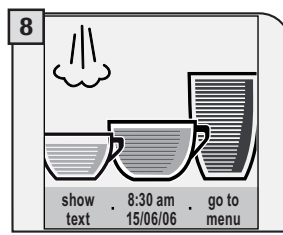
If necessary, press the key  to display the desired language. Select the language.



Press .



Press .



The machine is now ready for use.

Set the clock and the calendar of the machine as shown on page 25.

«AQUA PRIMA» WATER FILTER

To improve the quality of the water you use, and extend the life of your machine at the same time, it is recommended that you install the "Aqua Prima" water filter. After installation, go to the water filter initialization program (see programming). In this way, the machine advises the user when the water filter must be replaced.



1 Remove the „Aqua Prima” water filter from its packaging. Enter the date of the current month.



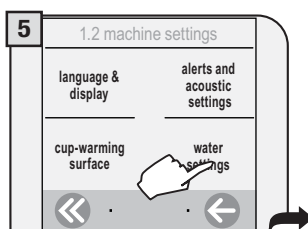
2 Insert the water filter in its place within the empty tank (see figure); Press down until it clicks into place.



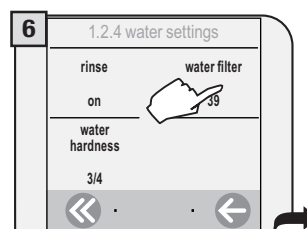
3 Fill the tank with fresh drinking water. Let the water filter soak in the full tank for 30 minutes for a correct initialization.



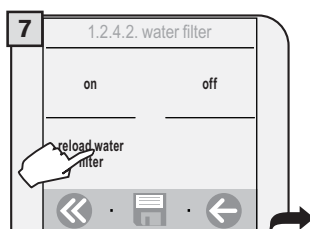
4 Place a container beneath the hot water spout.



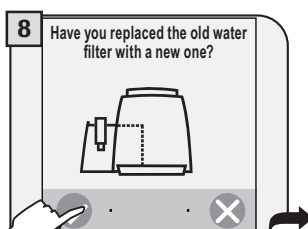
5 Access programming (see page 18 and 19). Press "water settings".



6 Press "water filter".



7 Press "reload water filter".



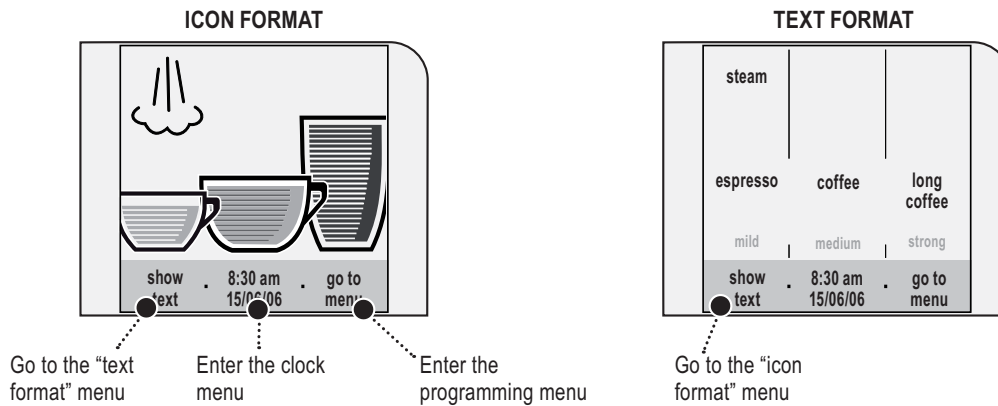
8 Press the key to confirm the introduction of the new water filter.



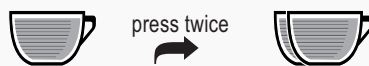
9 Turn the knob until the position is reached. Water dispensing begins.

Once finished, the "close steam knob" message appears on the display. Turn the knob back to the rest position (●). Fill the water tank if necessary. The machine is now ready for use and the "Aqua Prima" water filter control is active (see page 21).

It is possible to change the type of display and choose between "icon format" and "text format"



- To get the desired coffee, press the corresponding symbol on the display. The machine automatically performs all the necessary operations.
- Press the icon twice to make 2 cups.



(OPTI-DOSE) INDICATES THE GROUND COFFEE QUANTITY

The colour intensity of the icon indicates the quantity of coffee to be ground for preparing the product. The greater the quantity of coffee ground, the stronger the coffee dispensed will be.



When the machine is programmed to use pre-ground coffee or when a product is customized, the icon is displayed in a different way and/or accompanied by an asterisk (see the paragraphs about programming beverages).



COFFEE INTENSITY

The SBS system has been carefully designed to give your coffee the intense taste you desire. Simply turn the dial and you will notice that the coffee goes from mild intensity to strong intensity.

SBS – SAECO BREWING SYSTEM

SBS adjusts the intensity of the brewed coffee. The coffee may even be adjusted while brewing. This adjustment has an immediate effect on the selected type of brewing.



ADJUSTING THE HEIGHT OF THE DRIP TRAY

Adjust the drip tray before dispensing any beverages so as to be able to use any kind of cup.

To raise the drip tray, press lightly on the lower part of the button. To lower the drip tray, press lightly on the upper part of the button. When the desired height is reached, release the button.

Note: There is a red float in the drip tray to warn when it is necessary to empty the tray.



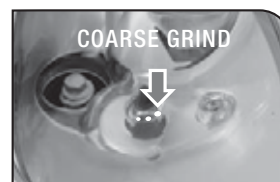
COFFEE GRINDER ADJUSTMENT

The machine lets you make slight adjustments to the coffee grinder to adapt it to the kind of coffee used.

The adjustment must be performed by pressing the pin located inside the coffee hopper. This must be turned by means of the supplied key only.

Turn the pin one notch at a time and brew 2-3 cups of coffee; the grinder adjustment can only be noticed in this way.

The references located inside the container indicate the grind setting.



COFFEE BREWING CAN BE STOPPED AT ANY TIME BY PRESSING «STOP COFFEE» AGAIN.



THE STEAM SPOUT MAY REACH HIGH TEMPERATURES: DANGER OF SCALDING. DO NOT TOUCH IT WITH BARE HANDS.

To brew 2 cups, the machine dispenses half of the entered quantity and briefly interrupts dispensing in order to grind the second coffee dose. Coffee dispensing is then restarted and completed.

ESPRESSO / COFFEE / LONG COFFEE

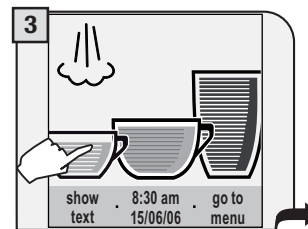
This procedure shows how to dispense an espresso. To dispense another type of coffee, press the appropriate icon. Use appropriate espresso or coffee cups so that the coffee will not overflow.



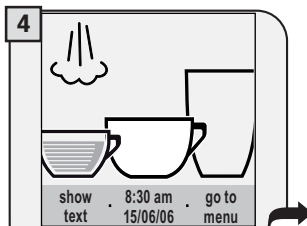
1 Position 1-2 cup(s) to dispense an espresso



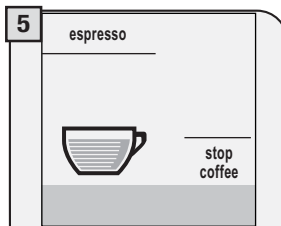
2 Position 1-2 cup(s) to dispense a coffee or a long coffee



3 Choose the product and press the corresponding icon on the display: once for 1 cup and twice for 2 cups.



4 The machine begins grinding the set quantity of coffee.



5 The machine begins dispensing the selected beverage.

The machine ends dispensing automatically on the basis of the quantity determined by the manufacturer. It is possible to customize this quantity. See page 16.

DISPENSING BEVERAGES WITH PRE-GROUND COFFEE

The machine allows you to use pre-ground and decaffeinated coffee. Pre-ground coffee must be poured into the appropriate compartment positioned next to the coffee bean hopper. Only use coffee ground for espresso machines and never coffee beans or instant coffee. (see the "Beverage programming" section on page 16)



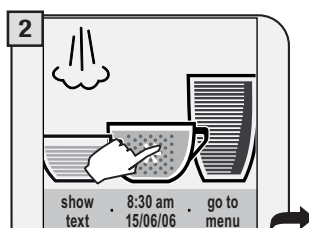
WARNING: PUT PRE-GROUND COFFEE INTO THE COMPARTMENT ONLY WHEN YOU WISH TO DISPENSE THIS TYPE OF PRODUCT.

INSERT ONLY ONE SCOOP OF GROUND COFFEE AT A TIME. TWO CUPS OF COFFEE CANNOT BE DISPENSED AT THE SAME TIME.

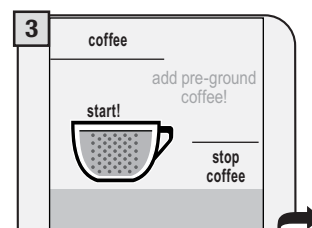
The preparation of a coffee with pre-ground coffee is shown in the example given below. The customized choice of using pre-ground coffee is shown on the display with an asterisk next to the chosen beverage.



1 Place 1 cup to brew one coffee.



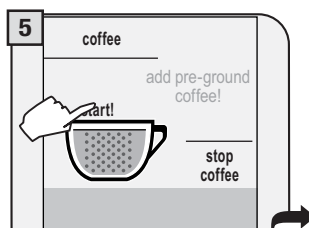
2 Press the appropriate key. The display will show:



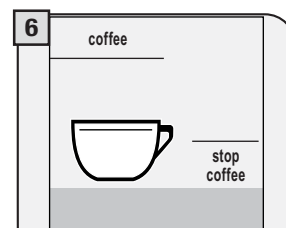
3 A message reminds the user to pour pre-ground coffee into the appropriate compartment.



4 Pour pre-ground coffee in the appropriate compartment using the measuring scoop provided.



5 Press "start" to start dispensing.



6 The machine begins dispensing the selected beverage.

Note:

- If brewing does not start within 30 seconds from the appearance of the message (3), the machine will return to the main menu and discharge any inserted coffee into the coffee grounds drawer;
- If no pre-ground coffee is poured into the compartment, only water will be dispensed;
- If the dose is excessive or if 2 or more scoops of coffee are added, the machine will not dispense the product and the coffee in the compartment will be discharged into the coffee grounds drawer.

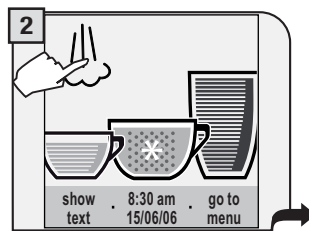
HOT WATER DISPENSING



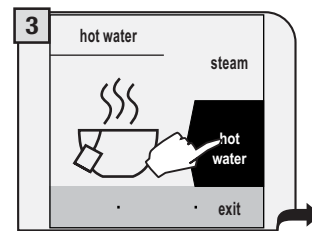
DISPENSING MAY BE PRECEDED BY SHORT SPURTS OF HOT WATER AND SCALDING IS POSSIBLE. THE HOT WATER/STEAM SPOUT MAY REACH HIGH TEMPERATURES: DO NOT TOUCH IT WITH BARE HANDS. USE THE APPROPRIATE HANDLE ONLY.



Place a container beneath the steam/hot water spout.




Press the icon.



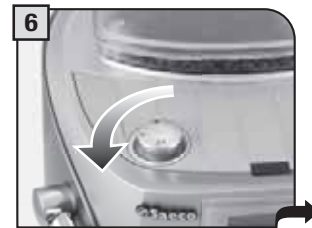
Select the hot water dispensing.



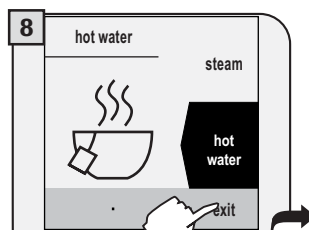
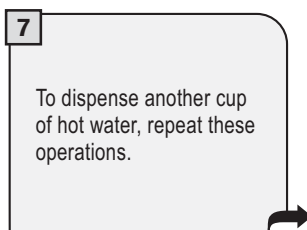
Turn the knob until the  position is reached.



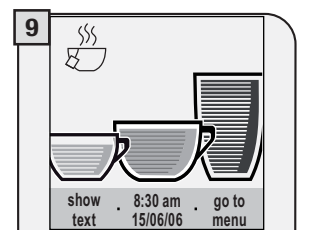
Wait until the machine has dispensed the desired quantity of water.




When the machine has dispensed the desired quantity, turn the knob until it is in the rest position (●).



Press "exit" to return to the main menu.



Note: if the display shows the hot water icon , hot water may be dispensed by simply turning the knob as shown at point 4.

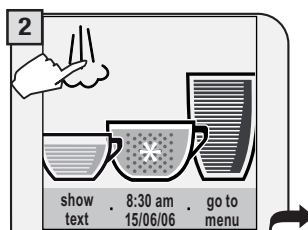
STEAM DISPENSING



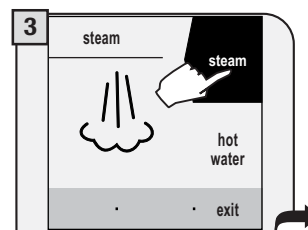
DISPENSING MAY BE PRECEDED BY SHORT SPURTS OF HOT WATER AND SCALDING IS POSSIBLE. THE HOT WATER/STEAM SPOUT MAY REACH HIGH TEMPERATURES: DO NOT TOUCH IT WITH BARE HANDS. USE THE APPROPRIATE HANDLE ONLY.



Place a container with the beverage to be warmed up beneath the steam spout.




Press the icon.



Select steam dispensing.



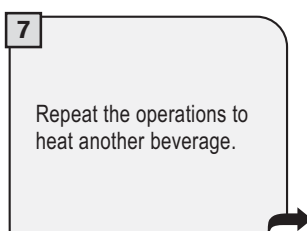
Turn the knob until the  position is reached.



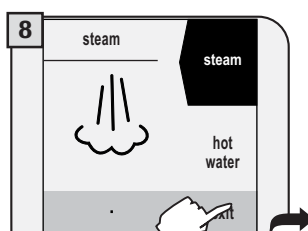
Heat the beverage; move the container while heating.



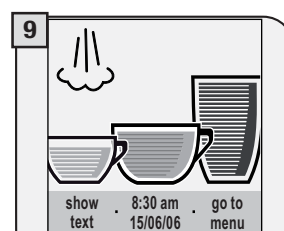
When you have finished, turn the knob until it is in the rest position (●).




Repeat the operations to heat another beverage.



Press "exit" to return to the main menu.



After dispensing, clean the steam spout as described on page 36.

Note: if the display shows the steam icon , steam may be dispensed by simply turning the knob as shown at point 4.

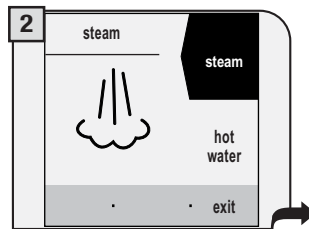
CAPPUCCINO



DISPENSING MAY BE PRECEDED BY SHORT SPURTS OF HOT WATER AND SCALDING IS POSSIBLE. THE HOT WATER/STEAM SPOUT MAY REACH HIGH TEMPERATURES: DO NOT TOUCH IT WITH BARE HANDS. USE THE APPROPRIATE HANDLE ONLY.



1 Fill 1/3 of the cup with cold milk.

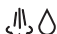


2 Select steam dispensing (see point 2 and 3 on page 13).



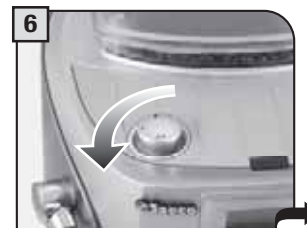
3 Place the cup beneath the steam spout.



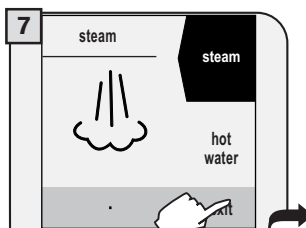
4 Turn the knob until the  position is reached.



5 Froth the milk: move the cup during heating.



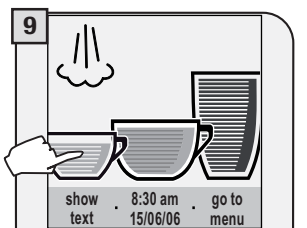
6 When you have finished, turn the knob until it is in the rest position (●).



7 Press "exit" to return to the main menu.



8 Place the cup beneath the spout.



9 Press the key once to brew coffee.

After dispensing, clean the steam spout as described on page 36.

To dispense 2 cappuccinos:

- froth two cups of milk by following point 1 to 6;
- dispense two coffees by following the points from 7 to 9 (then press the icon of the desired coffee twice).

This device, which may be purchased separately, enables you to easily and comfortably prepare delicious cappuccinos.



Warning: before using the Milk Island, read the manual and all precautions carefully for correct use.



Important note: the quantity of milk in the carafe must never be below the “MIN” minimum level nor exceed the “MAX” maximum level. Thoroughly clean all the Milk Island components after use.



To guarantee best results when preparing cappuccino, we recommend using cold (0-8°C / 32-45°F), partially skimmed milk.




1 Fill the milk carafe with the quantity of milk desired (between the MIN and MAX levels indicated).





2 Place the milk carafe onto the base of the Milk Island. Check that the light on the base is green.

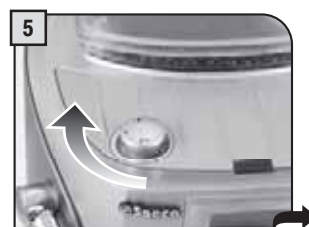



3 Turn the knob to the  position.



4 Wait for the milk to be frothed.

The machine will stop automatically after dispensing steam continuously for 2 minutes.
To dispense more steam turn the knob to the  position and then back to the  position.



5 When the desired emulsion has been reached, turn the knob until it is in the rest position ().



6 Remove the carafe using the handle.



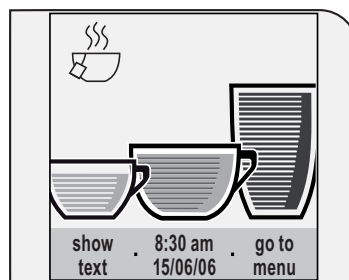
7 Gently swirl the carafe and pour the milk into the cup.



8 Position the cup with frothed milk under the dispensing head. Dispense coffee into the cup.

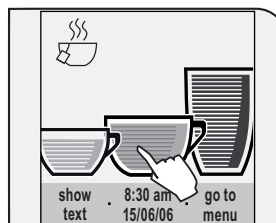
BEVERAGE PROGRAMMING MENU

Every beverage can be programmed according to your individual tastes. This customization is shown on the display by adding an asterisk.



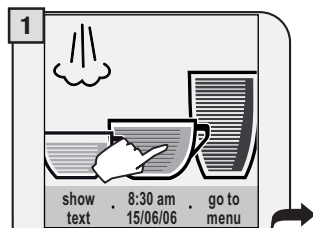
When a product has been customized, it is possible to dispense only that type of coffee. To modify the quantity of coffee, you must do a new customization or reset the customization.

To program the desired beverage:



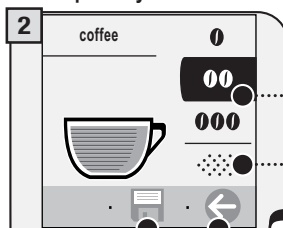
Hold down the beverage key for two seconds

ESPRESSO / COFFEE / LONG COFFEE PROGRAMMING



Enter the menu of the coffee to be customized (press the corresponding icon for two seconds).

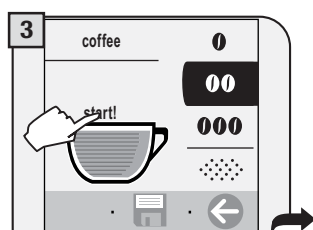
In this phase you can:



select the quantity of coffee to be ground (opti-dose)
select the use of pre-ground coffee

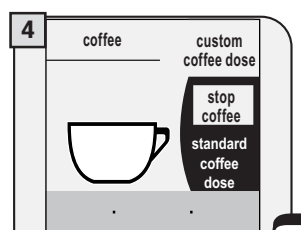
save settings

return to the previous window

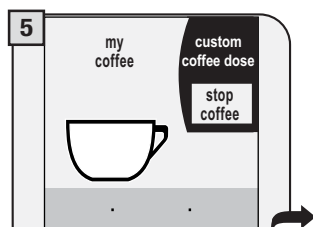


By pressing Start! the machine prepares to brew coffee.

After pressing Start!, you must finish the brewing cycle.

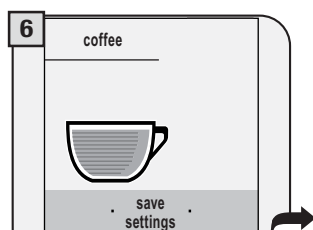


The machine automatically starts and finishes brewing coffee, according to the standard settings.



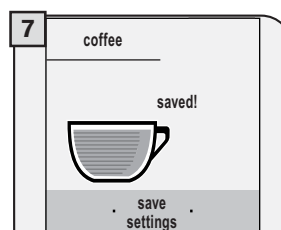
To brew a different amount of coffee than the one preset by the manufacturer, press "custom coffee dose" before the end of the brewing cycle in progress. When the desired quantity is reached, press "stop coffee".

The brewing cycle may be interrupted only by pressing "stop coffee". If the key is not pressed the coffee may overflow the cup.



Once the dispensing is completed, save settings within five seconds.

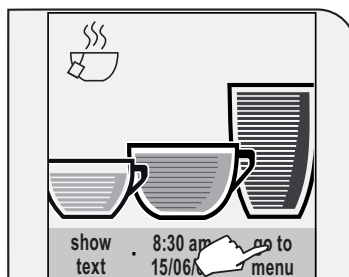
If "save settings" is not pressed the machine returns to the main menu and the customized settings will not be saved.



The display shows the confirmation of the saved settings, and the machine automatically returns to the main menu.

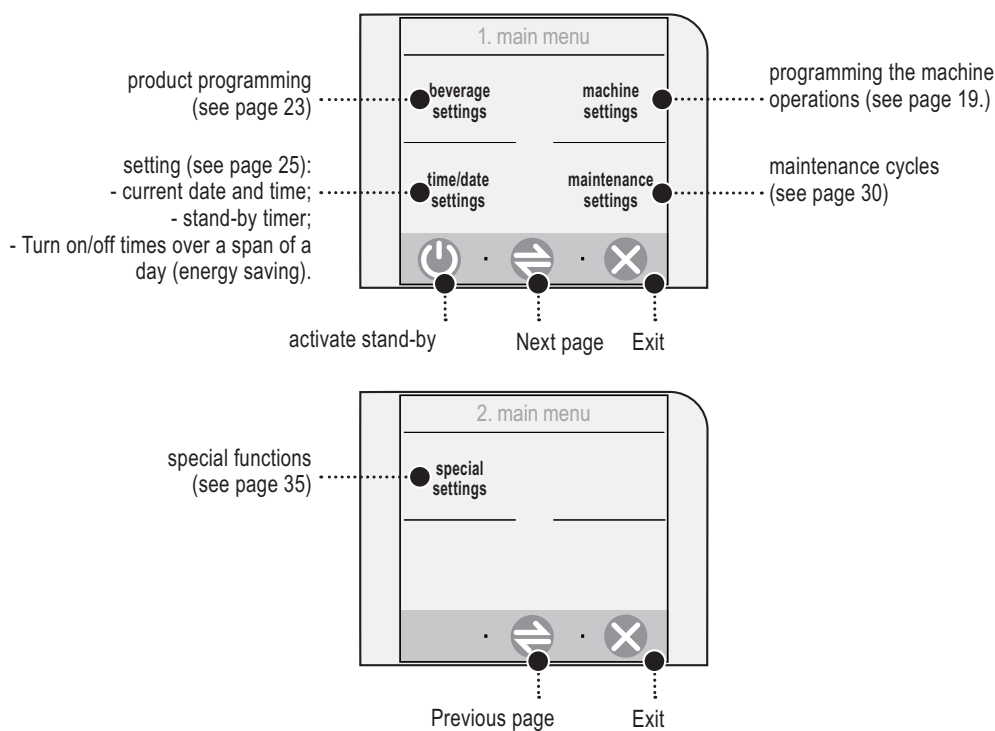
MACHINE SETTINGS

Some of the machine's functions may be programmed to customize operations according to your own requirements.



Press "go to menu".

The programming menu will be accessed:

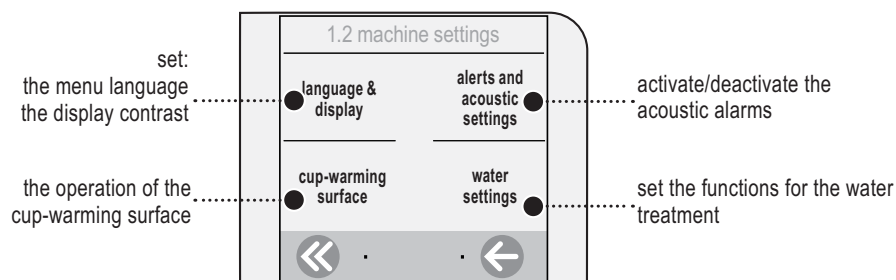


After having set each of the following menus, press

- to return to the previous screen WITHOUT saving the new settings;
- to save;
- to return to the main menu WITHOUT saving the new settings.

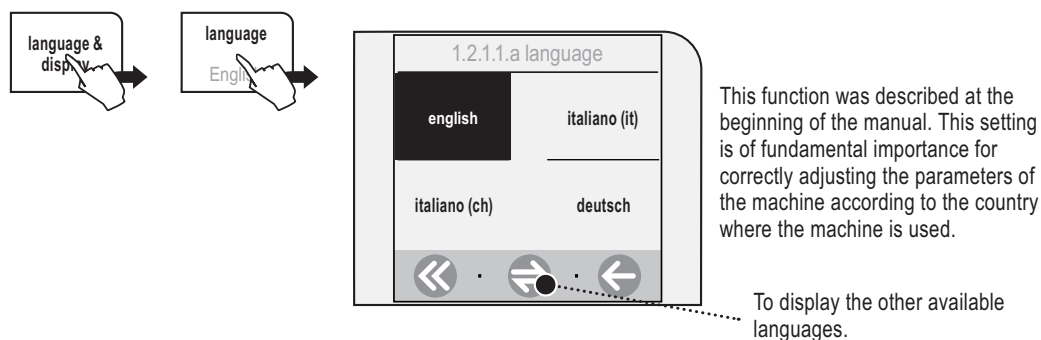
MACHINE SETTINGS

When the machine settings are selected the following screen appears. Here you may:



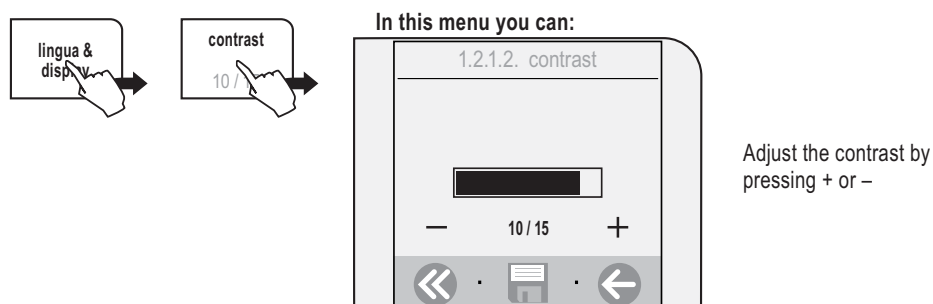
<LANGUAGE & DISPLAY> «LANGUAGE» MENU

To change the display language of the messages. Press "language & display" and "language".



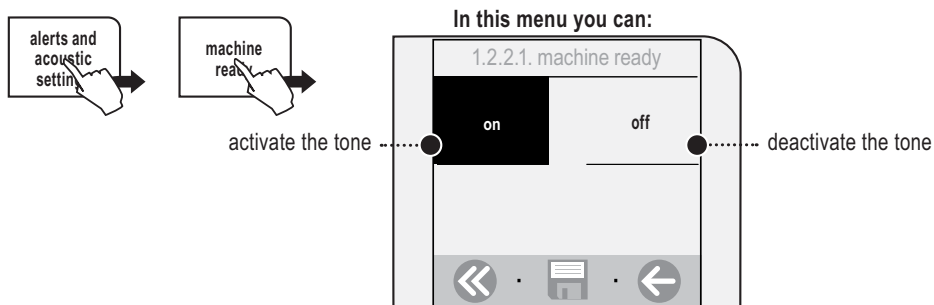
<LANGUAGE & DISPLAY> «CONTRAST» MENU

To set the correct contrast of the display. Press "language & display" and "contrast".



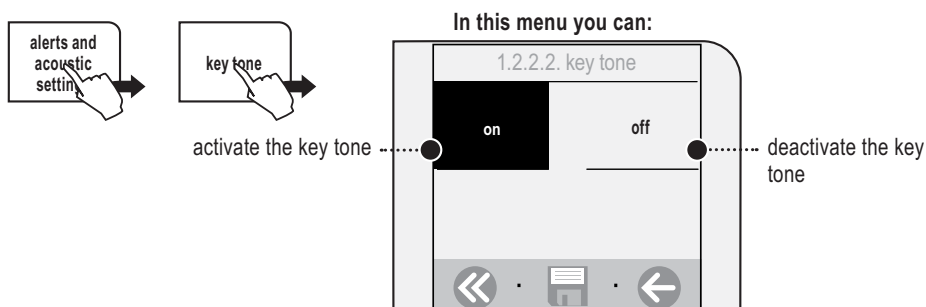
<ALERTS AND ACOUSTIC SETTINGS> «READY MACHINE» MENU

This function activates/deactivates a tone every time the machine is ready. Press "alerts and acoustic settings" and "machine ready".



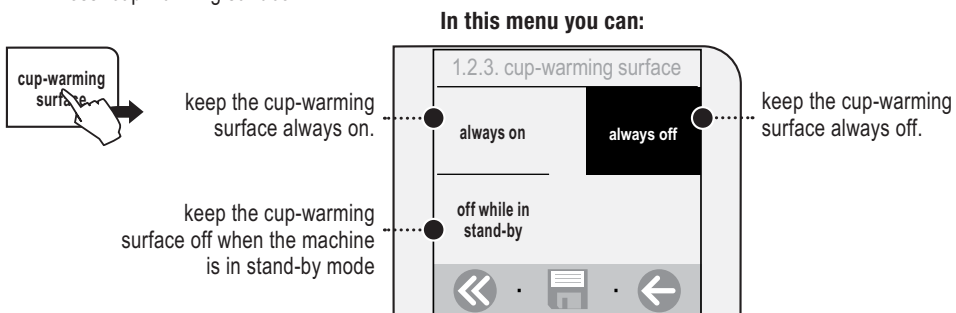
<ALERTS AND ACOUSTIC SETTINGS> «KEY TONE» MENU

This function activates/deactivates a tone every time a key is pressed. Press "alerts and acoustic settings" and "key tone".



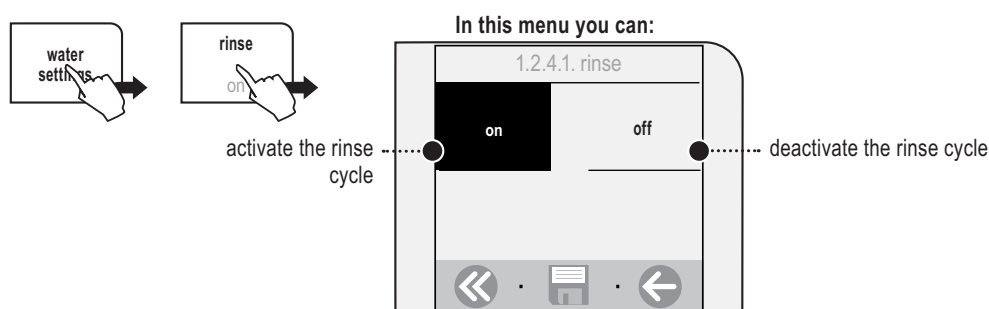
«CUP-WARMING SURFACE» MENU

To set the operation of the cup-warming surface located on the upper part of the machine. Press "cup-warming surface".



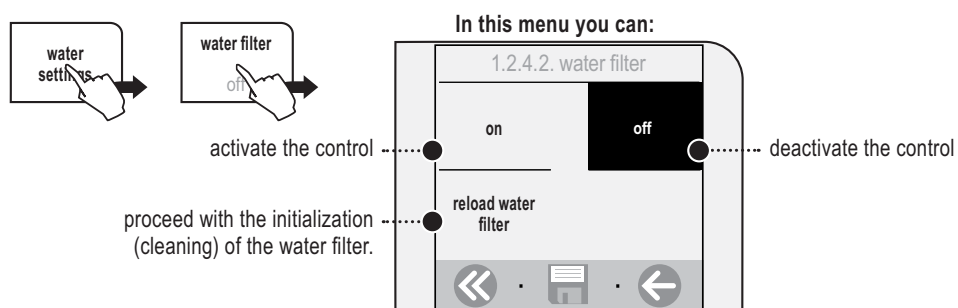
<WATER SETTINGS> «RINSE»

To clean the internal circuits in order to guarantee that the beverages are only made with fresh water. The function is enabled as default by the manufacturer. Note: this rinse cycle is performed every time the machine is turned on after the warming phase.
Press “water settings” and “rinse”.



<WATER SETTINGS> «WATER FILTER» MENU

To activate/deactivate the warning to replace the “Aqua Prima” water filter. The machine informs the user when the “Aqua Prima” water filter needs to be replaced.
Press “water settings” and “water filter”.



Important note.

This setting automatically adjusts the parameters which allow the user to perform a correct machine maintenance.

Select:

on: only when the “Aqua Prima” water filter is installed in the water tank as shown on page 7.

This function is automatically activated after selecting “reload water filter”.

off: when there is no “Aqua Prima” water filter in the water tank.

reload water filter: when a new “Aqua Prima” water filter is installed in the water tank.

<WATER SETTINGS> «WATER HARDNESS» MENU

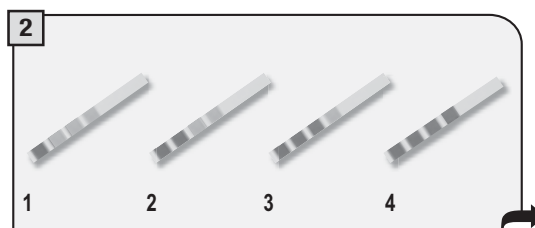
With the "Water hardness" function you can adapt your machine to the hardness degree of the water you use. The machine will so require descaling at the right moment.

Hardness is expressed on a scale from 1 to 4. The appliance is preset at value 3.

Press "water settings" and "water hardness".

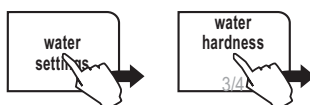


Immerse the water hardness tester provided with the machine in water for 1 second.

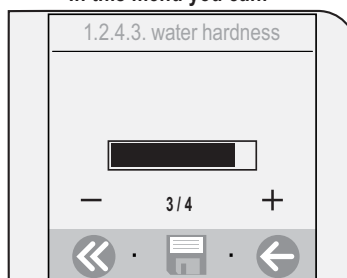


Check the value.

The tester may be used only for one measurement.



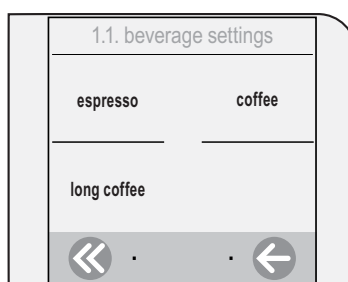
In this menu you can:



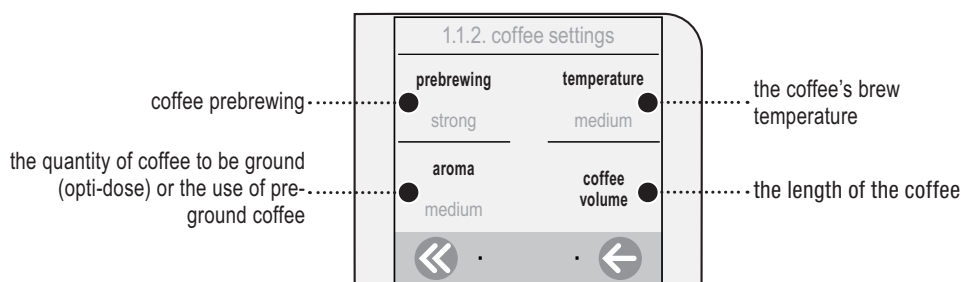
Set the water hardness obtained from the test on the machine by pressing + or -.

BEVERAGE SETTINGS

To adjust the general brew parameters of the various types of coffee. Press "beverage settings" on the main menu.



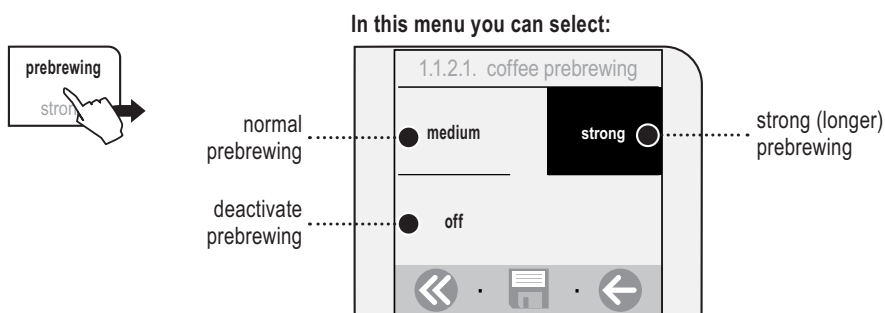
Selecting every single product you can adjust:



The current programming status is indicated according to each parameter

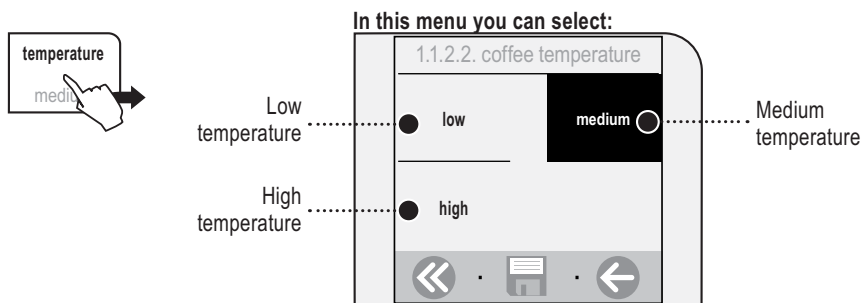
«PREBREWING» ADJUSTMENT

To set the prebrewing function: the coffee is slightly dampened before brewing to bring out the full aroma of the coffee which acquires an excellent taste. Press "prebrewing".



COFFEE TEMPERATURE ADJUSTMENT

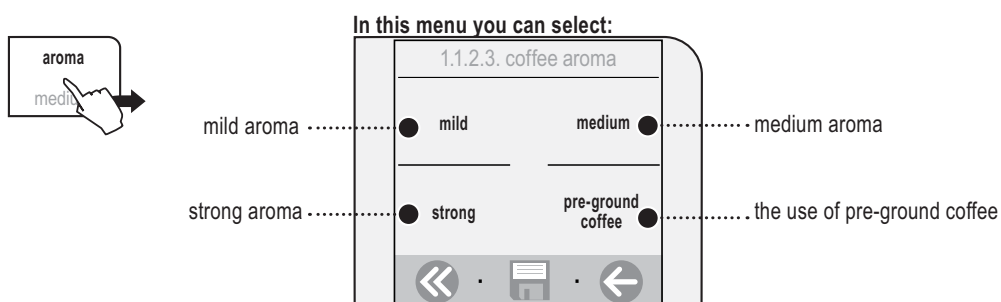
To set the temperature for preparing coffee. Press "temperature" and select the desired temperature.



«OPTI-DOSE» ADJUSTMENT FOR COFFEE BREWING

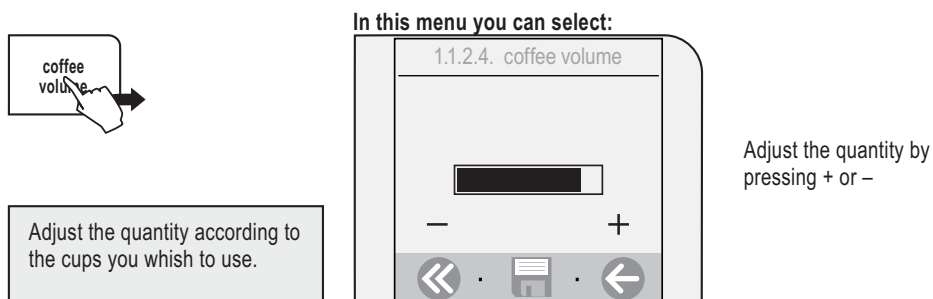
To set the coffee quantity to be ground and to set the use of pre-ground coffee.

You can taste your beverage with the quantity of coffee you desire or you may choose to prepare it with decaffeinated coffee using the "pre-ground" function. Press "coffee aroma".



WATER QUANTITY ADJUSTMENT FOR COFFEE BREWING

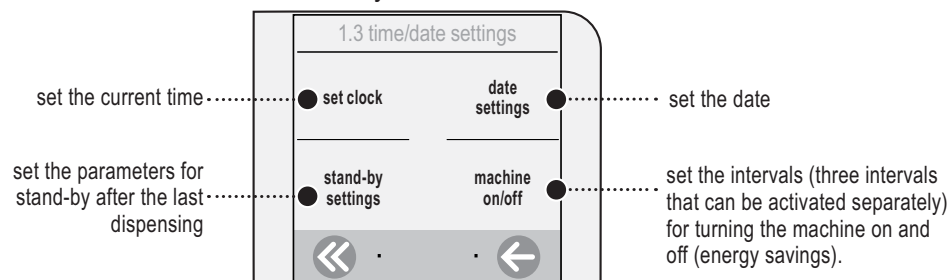
To set the water quantity to be used for preparing coffee. Press "coffee volume".



TIME/DATE SETTINGS

To set the current time, the stand-by timer and the energy saving function. Press "time/date settings" from the main menu.

In this menu you can:

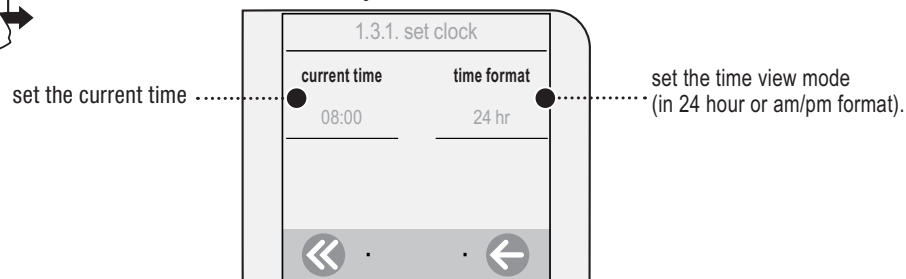


SET CLOCK

To set all the parameters concerning the clock. Important to correctly program the times for turning the machine on and off! Press "set clock".

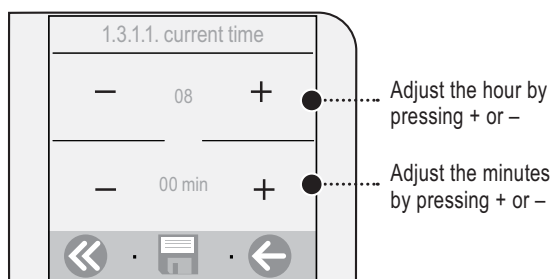


In this menu you can:



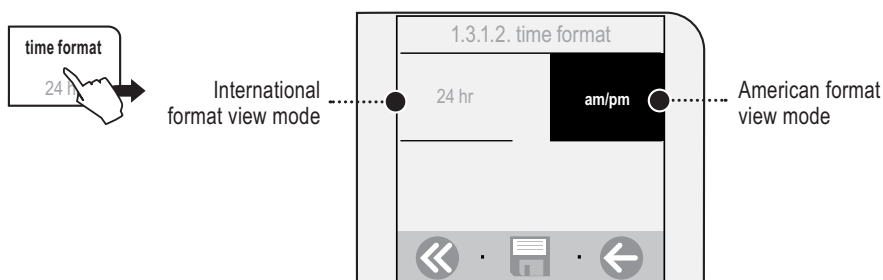
Current time

To set the current time on the machine. Press "current time".



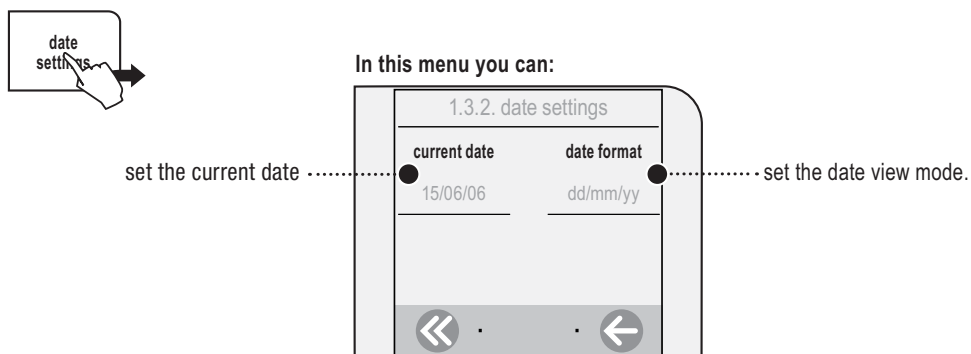
Time format

To set the time view mode. The modification of this setting adjusts all the parameters that require viewing/setting the time. Press "time format".



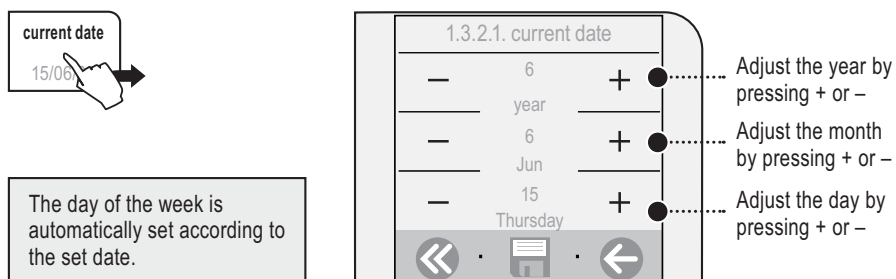
DATE SETTINGS

To set all the parameters concerning the calendar. Important to correctly program the times for turning the machine on and off. Press "date settings".



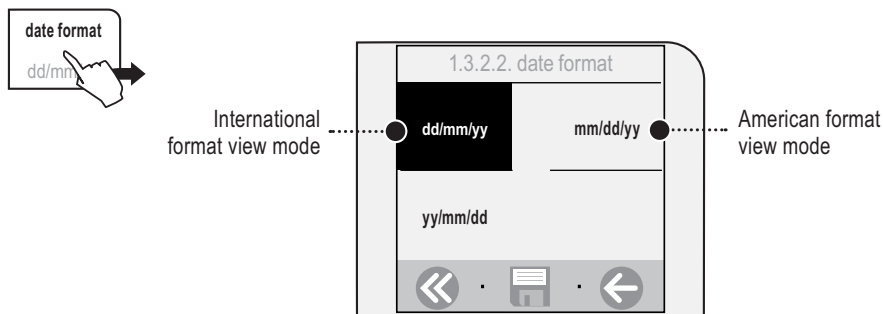
Current date

To set the current date on the machine. Press "current date".



Time format

To set the date view mode. The modification of this setting adjusts all the parameters that require viewing/setting the date. Press "date format".

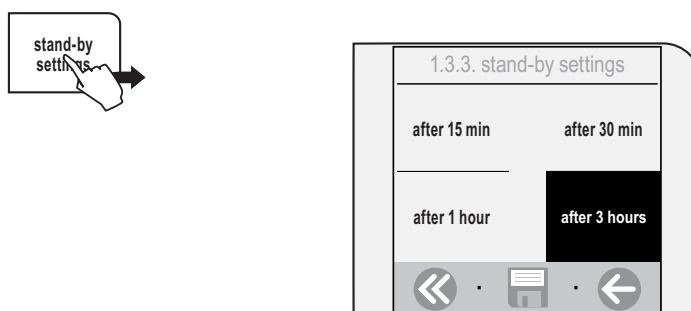


STAND-BY SETTINGS

To set after how much time, from the last dispensing, the machine will go into stand-by.

The default setting is «after 3 hours».

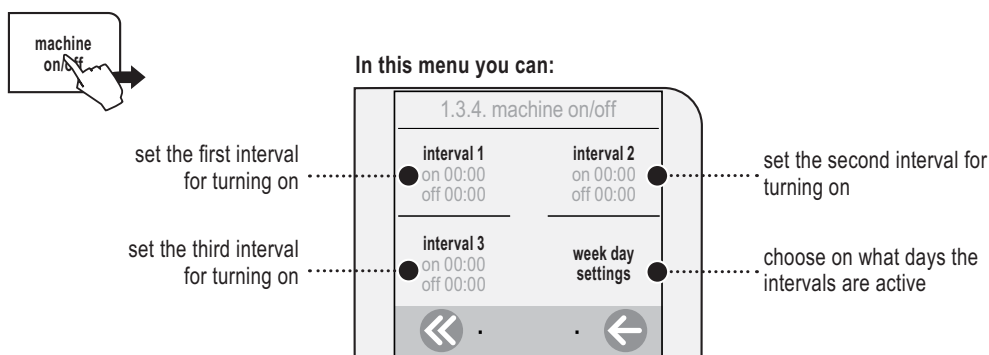
Press "stand-by settings".



When the set time has elapsed, the machine goes in stand-by.
Press "start". After having performed the function diagnostics and the heating up phase, the machine is once again ready for use.

MACHINE ON/OFF

With this function the machine turns on (activate) and turns off (energy saving) at the desired times. The machine manages this function only if it is turned on at the main power button. Press "machine on/off"



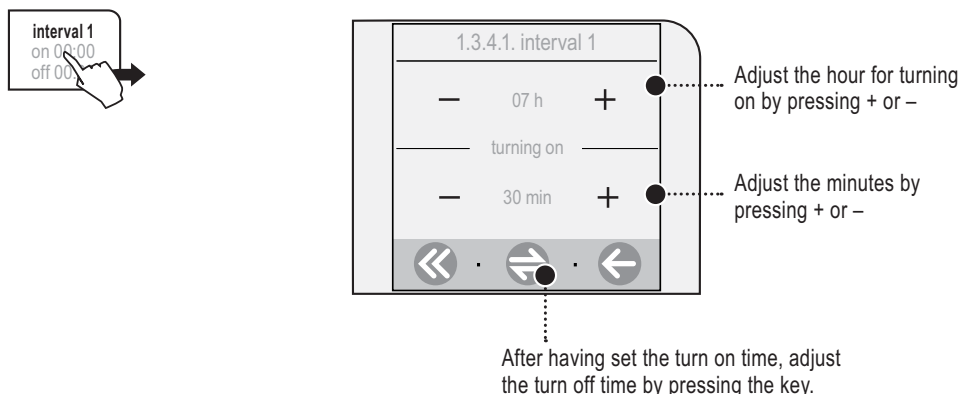
To correctly set the settings, you must:

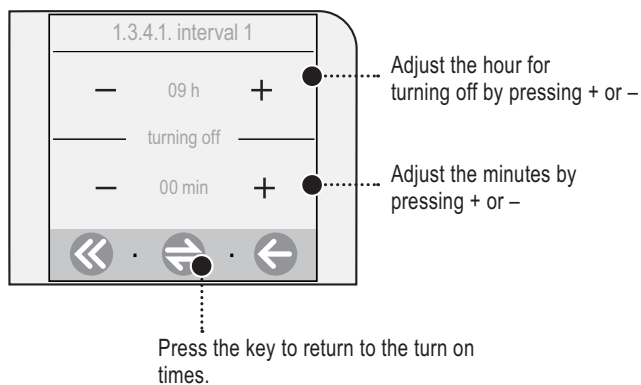
- set the individual intervals for turning on and turning off the machine;
- choose on what days these intervals will be active.

it is recommended not to overlap intervals for turning on the machine.

Setting an interval for turning on the machine

In order to set an interval for turning on the machine, press the key for the interval that you wish to set. Press, for example, "interval 1".



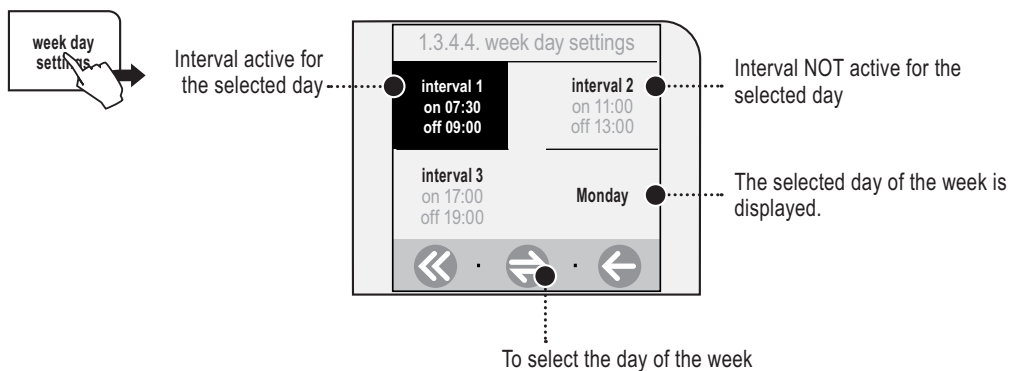


Note: to save the settings press one of the keys:



For each day, choose the intervals for turning on

Scroll the days of the week and, for each day, select the interval/s you wish to activate.



You can select various intervals for each day.

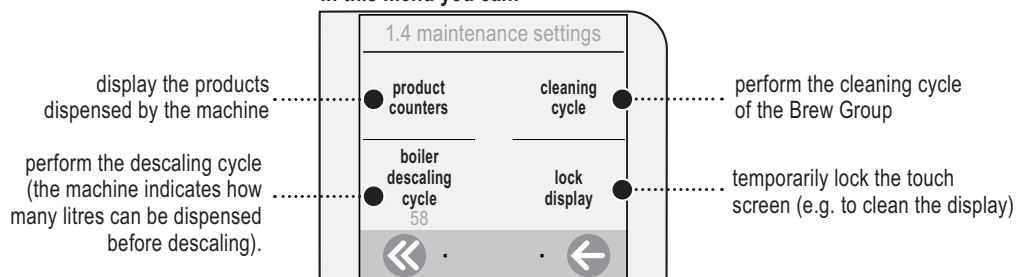
Note: to save the settings press one of the keys:



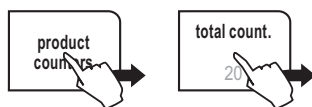
MAINTENANCE SETTINGS

To clean/maintain all the machine's internal circuits. Press "maintenance settings" on the main menu.

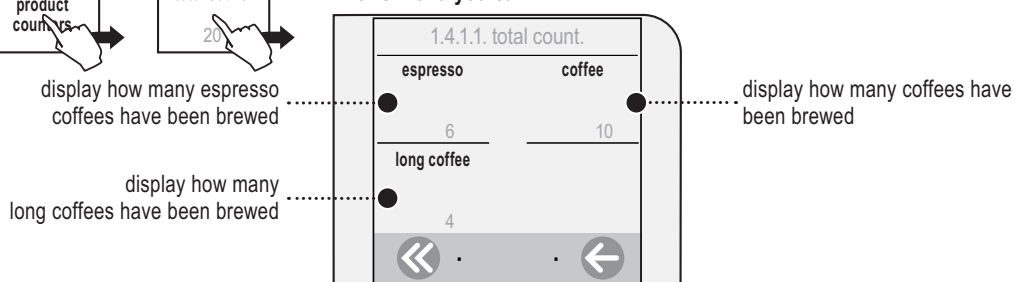
In this menu you can:



<PRODUCT COUNT.> «TOTAL COUNT.» MENU

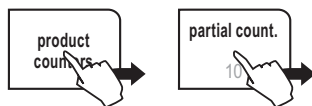


In this menu you can:



<PRODUCT COUNT.> «PARTIAL COUNT.» MENU

This function shows how many products have been prepared for every single type of coffee since last reset. Press "product counters" and "partial count."



In this menu you can:



«CLEANING CYCLE» MENU

To clean the machine's internal circuits used for brewing coffee.

To wash the Brew Group, simply clean with water as shown on page 37. This cleaning completes the maintenance of the Brew Group.

We recommend using saeco tablets, which can be purchased separately at your local dealer.

Note: before performing this function make sure that:

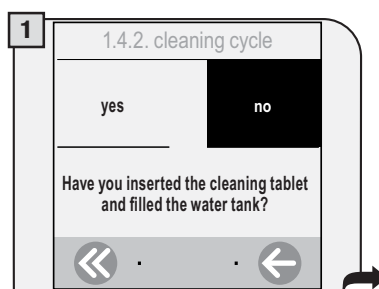
1. a large enough container is positioned under the spout;
2. the appropriate tablet for washing the Brew Group has been inserted;
3. Fill the water tank.



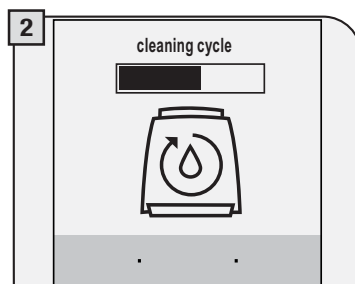
THE CLEANING CYCLE CANNOT BE INTERRUPTED.

A PERSON MUST BE PRESENT DURING THE OPERATION.

Press "cleaning cycle"



Make sure that the tablet has been inserted as shown. Press "yes".



Wait for the cleaning cycle to finish (approximately 8 minutes). The machine will return to the main menu.

«BOILER DESCALING CYCLE» MENU

To perform the automatic descaling cycle.

Descaling is necessary every 3-4 months or when the machine indicates it. The machine must be turned on and will automatically manage the distribution of the descaler.

A PERSON MUST BE PRESENT DURING THE OPERATION.

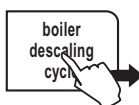
WARNING! NEVER USE VINEGAR AS A DESCALER.

Saeco descaler is recommended; however, you can use any non-toxic and/or non-harmful descaling product for coffee machines, commonly available in the shops. The used solution is to be disposed of according to the manufacturer's instructions and/or regulations in force in the country of use.

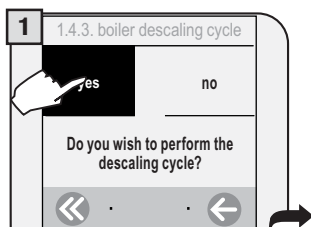
Note: before beginning the descaling cycle make sure that:

1. a large enough container is positioned under the water spout;
2. THE "AQUA PRIMA" WATER FILTER HAS BEEN REMOVED.

Press "boiler descaling cycle"



Descaling is carried out at a controlled temperature. If the machine is cold, you must wait until it has reached the right temperature; otherwise you must cool the boiler as follows:




Press "yes" to start.



Place a large enough container beneath the hot water spout.



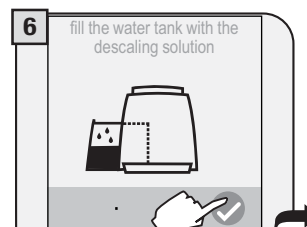
Turn the knob to the  reference.



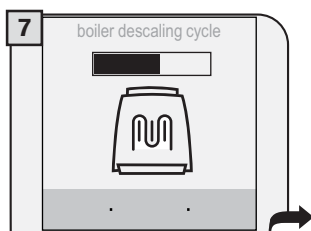
When the following message appears, the heater is at the right temperature



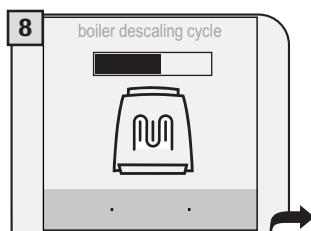
Pour the descaling solution into the tank. Insert the tank into the machine.



Press the  button to start.

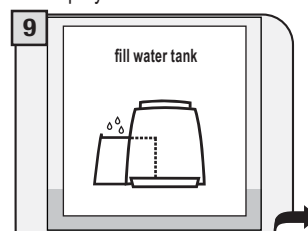


The machine begins to dispense the descaling solution through the hot water spout. The dispensing occurs at predetermined intervals, in order to allow the solution to be more effective.



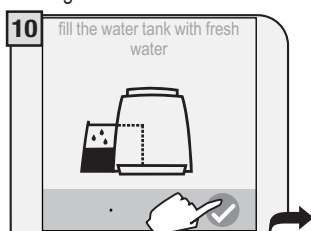
The intervals are displayed in such a way as to check the state of progress of the process.

When the solution is finished the following message appears on the display:

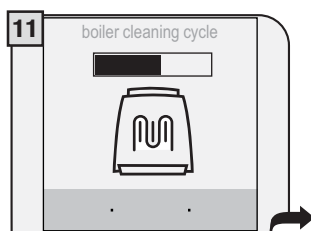


Remove the water tank, rinse with fresh drinking water to eliminate traces of the descaling solution, then refill with fresh drinking water.

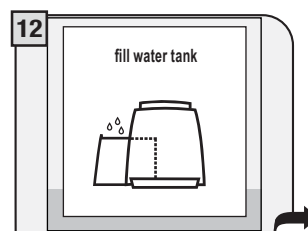
Insert the tank with fresh drinking water.



Rinse the machine's circuits by pressing the key.



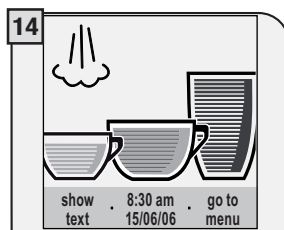
The machine performs the rinse cycle. During the rinse cycle, the machine may require the water tank to be filled.



Once the rinse cycle is finished the following screen appears. Remove the tank, install the "Aqua Prima" water filter again (if desired) and fill it with fresh drinking water.



Turn the knob until it is in the rest position (●).



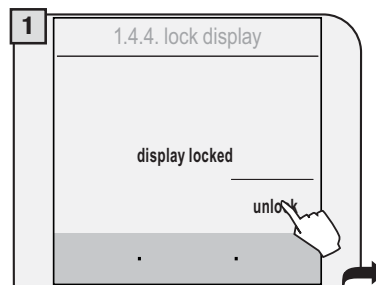
When descaling is complete, return to the main menu to dispense beverages.

«LOCK DISPLAY» MENU

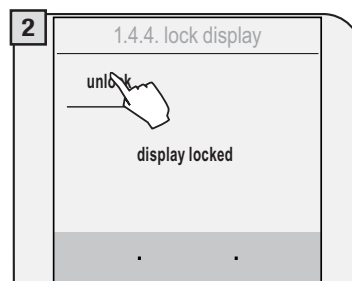
To clean the display. The touch screen display may be cleaned with a dampened cloth or with appropriate detergents for cleaning displays sold on the market.

Solvents, alcohol, harsh detergents and/or sharp objects that may damage the display must not be used.

Press "lock display"

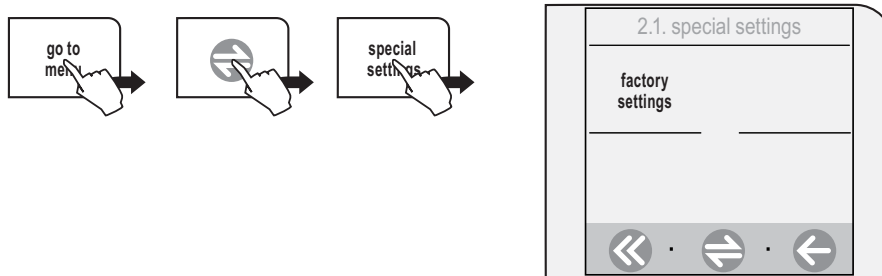


To reactivate the display, press "unlock" on the lower right-hand corner and then (within two seconds) "unlock" in the upper left-hand corner (this message appears only after having pressed the previous key).



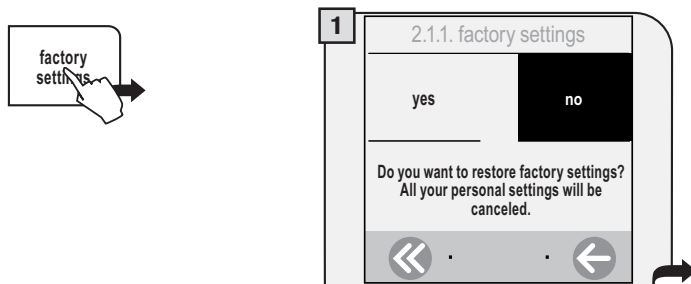
SPECIAL

This menu allows you to access special functions present on the machine. Press "special settings" on the main menu.



FACTORY SETTINGS

The function for restoring all the factory settings is contained in this menu. Press "factory settings".



If "yes" is selected, a subsequent confirmation by inverted keys is requested.

ALL THE CUSTOM SETTINGS WILL BE LOST AND CANNOT BE RECOVERED. AFTER RESTORING FACTORY SETTINGS, YOU MUST, IF DESIRED, REPROGRAM ALL THE MACHINE FUNCTIONS.



By selecting "yes" the settings are restored.



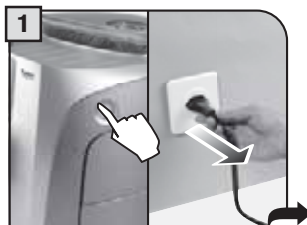
All the parameters are restored.

GENERAL MACHINE CLEANING

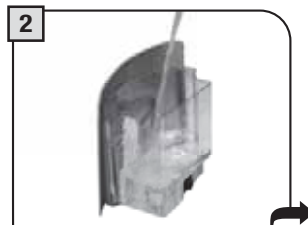
The cleaning described below must be performed once a week.
Note: if water remains in the tank for several days, do not use it.

WARNING! Never immerse the machine in water.

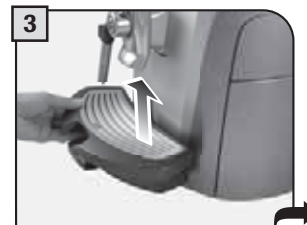
If you remove grounds with the machine off or when not signaled on the display, the count of the grounds emptied into the drawer is not reset. For this reason the machine might display the “empty coffee grounds drawer” message even after preparing just a few coffees.



Switch off the machine and unplug it.



Clean the tank and the cover.



Remove the drip tray, empty and wash it.



Remove the grounds drawer.



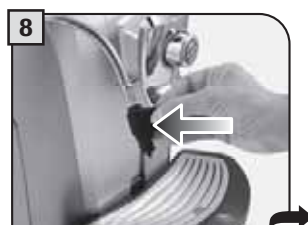
Empty and clean it.



With the brush, clean the pre-ground coffee compartment.



Remove the outer sleeve of the steam spout; then re-insert it.



Remove and wash the steam spout support; then re-insert it.



Clean the display with a dry cloth.

CLEANING THE BREW GROUP.

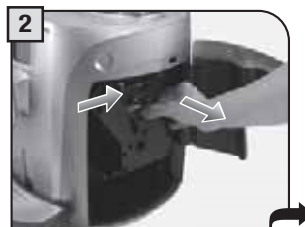
The Brew Group must be cleaned at least once a week.

Wash the Brew Group with warm water.

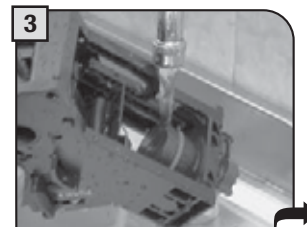
WARNING! Do not wash the Brew Group with detergents that can compromise its correct operation. Do not wash in the dishwasher.



1 Open the service door and remove the dregs drawer.



2 Press the PUSH button to remove the Brew Group.



3 Wash the Brew Group and the filter and dry.



4 Make sure the Brew Group is in rest position; the two references must match.



5 Make sure the components are in the correct position. The hook shown must be in the correct position; to check its position, firmly press the "PUSH" button.



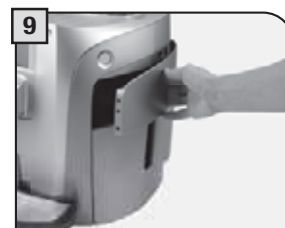
6 The lever on the rear part of the group must be in contact with the group base.




7 Insert the washed and dried Brew Group. DO NOT PRESS THE "PUSH" BUTTON.



8 Insert the dregs drawer.



9 Close the service door.

GUIDE MESSAGE THAT APPEARS	HOW TO REMOVE THE MESSAGE
close coffee bean lid	Close the coffee bean hopper lid to be able to make a beverage.
add coffee beans	Fill the coffee bean hopper with coffee beans.
insert brew group	Insert the Brew Group in its seat.
insert coffee grounds drawer	Insert the coffee grounds drawer.
empty coffee grounds drawer	Remove the coffee grounds drawer and empty the grounds into an appropriate container. Note: the coffee grounds drawer must be emptied only when the machine requires it and when the machine is turned on. If you empty the drawer with the machine turned off it will not record the emptying operation.
door open	Close the service door to be able to make the machine functional.
fill water tank	Remove the water tank and refill it with fresh drinking water.
empty drip tray	Open the side door and empty the drip tray located under the Brew Group.
change water filter	The Aqua Prima water filter must be replaced in the following cases: 1. 60 litres of water have been dispensed; 2. 90 days have passed since its installation; 3. 20 days have passed and the machine has not been used. Note: this message appears only when «inserted» has been selected in the water filter function (see page 21).
carafe removed milk island removed	The steam knob has been turned to the  position and either the Milk Island has not been installed or the carafe is not positioned correctly. Install the Milk Island or position the carafe correctly. Otherwise, turn the knob until it is in the rest position (●).
descale	A descaling cycle must be performed on the machine's internal circuits.
energy saving	Press "start"
Stand-by	

TECHNICAL DATA

Nominal voltage	See label on the appliance
Power rating	See label on the appliance
Power supply	See label on the appliance
Shell material	ABS - Thermoplastic
Size (w x h x d)	320 x 370 x 400 mm - 12.60" x 14.57" x 15.75"
Weight	9 Kg - 19.8 lbs
Cable length	1200 mm - 47.24"
Control panel	Front (TOUCH-SCREEN)
Water tank	1.7 liters - 57.5 oz / Removable
Coffee bean hopper capacity	250 grams - 8.9 oz / coffee beans
Pump pressure	15 bar
Boiler	Stainless steel
Coffee grinder	With ceramic burrs
Quantity of ground coffee	7 - 10.5 grams / 0.25 - 0.37 oz.
Dregs drawer capacity	14
Safety devices	Boiler pressure safety valve – Double safety thermostat.

Subject to engineering and manufacturing changes due to technological developments.

The machine conforms to the European Directive 89/336/EEC (Italian Legislative Decree 476 dated 04/12/92) concerning electromagnetic compatibility.

SOS**IN CASE OF EMERGENCY**

Immediately unplug the cord from the outlet.

**ONLY USE THE APPLIANCE**

- Indoors.
- For preparing coffee, hot water and for frothing milk.
- For domestic use.
- By adults in non altered psycho-physical conditions.

**PRECAUTIONS FOR THE USE OF THE MACHINE**

- Do not use the machine for purposes other than those indicated above, in order to avoid danger.
- Do not introduce any substances other than those indicated in the instruction manual.
- During the normal filling of any reservoirs, all nearby reservoirs must be closed.
- Fill the water tank only with fresh drinking water: Hot water and/or any other liquid may damage the machine.
- Do not use carbonated water.
- Do not put fingers or any material other than coffee beans in the coffee grinder.
- Before manipulating the coffee grinder, turn off the machine's main switch and unplug the cord.
- Do not put instant coffee or whole bean coffee in the ground coffee container.
- Only use your finger when operating the LCD screen.

**CONNECTION TO ELECTRICAL POWER**

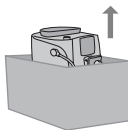
The connection to the electrical network must be carried out in accordance with the safety regulations in force in the user's country.

The machine must be connected to a socket which is:

- compatible with the type of plug installed on the machine;
- suitably sized to comply with the ratings shown on the machine identification plate.
- effectively grounded.

The power cord must not:

- come into contact with any type of liquid: danger of electric shocks and/or fire;
- be crushed and/or come in contact with sharp surfaces;
- be used to move the machine;
- be used if damaged;
- be handled with damp or wet hands;
- be wound in a coil when the machine is being operated.
- Be tampered with.

**INSTALLATION**

- Choose a solid, stationary flat surface (no more than 2° of inclination).
- Do not install the machine in areas where water could be sprayed.
- Optimal operational temperature: 10°C - 40°C / 50-104 degrees Fahrenheit
- maximum humidity: 90%.
- The machine should be installed in an adequately lit, ventilated, hygienic location and the electric socket should be within easy reach.
- Do not place on heated surfaces!
- Install it at least 10 cm / 4" from the walls and cooking surfaces.
- Do not use in places where the temperature may drop to a level equal to and/or lower than 0°C / 32 degrees Fahrenheit. If the machine has been exposed to such conditions notify the customer service center, who will have to carry out a safety check.
- Do not use the machine near inflammable and/or explosive substances.
- The machine must not be used in an explosive or volatile atmosphere or where there is a high concentration of dust or oily substances suspended in the air.
- Do not install the machine on top of other appliances.



DANGERS

- The appliance must not be used by children and persons who have not been informed of its operation.
- The appliance is dangerous to children. When left unattended, unplug from the electrical outlet.
- Keep the coffee machine packaging out of the reach of children.
- Never direct the jet of hot water and/or steam towards yourself or others. Danger of scalding.
- Do not insert objects through the appliance's openings. (Danger! Electrical Current!).
- Do not pull out the plug by yanking on the power cord or touching it with wet hands.
- Warning. Danger of burning when in contact with hot water, steam and the hot water spout.



FAILURES

- Do not use the appliance if a failure has been verified or suspected, for example after being dropped.
- Any repairs must be performed by an authorized customer service center.
- Do not use the appliance with a defective power cord. The manufacturer or its customer service center will have to replace the power cable if damaged. (Caution! Electrical Current!).
- Turn off the appliance before opening the service door. Danger of burns!



CLEANING / DESCALING

- For cleaning the milk and coffee circuits use only recommended detergents provided with the machine. These detergents must not be used for other purposes.
- Before cleaning the machine, the main switch must be turned to OFF (0), unplugged from the socket and cooled down.
- Keep the appliance from coming into contact with splashes of water or immersing in water.
- Do not dry the machine's parts in conventional or microwave ovens.
- The machine and its components must be cleaned and washed after the machine has not been used for a certain period.



REPLACEMENT PARTS

For safety reasons, use only original replacement parts and original accessories.



WASTE DISPOSAL

- The packing materials can be recycled.
- Appliance: unplug the appliance and cut the power cord.
- Deliver the appliance and power cord to a service center or public waste disposal facility

This product complies with eu directive 2002/96/ec.

The symbol on the product or on its packaging indicates that this product may not be treated as household waste. Instead it shall be handed over to the applicable collection point for the recycling of electrical and electronic equipment.

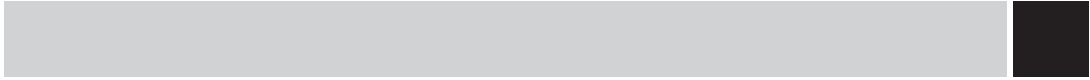
By ensuring this product is disposed of correctly, you will help prevent potential negative consequences for the environment and human health, which could otherwise be caused by inappropriate waste handling of this product. For more detailed information about recycling of this product, please contact your local city office, your household waste disposal service or the shop where you purchased the product.



FIRE SAFETY

In case of fire, use Carbon Dioxide extinguishers (CO₂).
Do not use water or dry-powder extinguishers.

This image shows a single sheet of white paper with horizontal ruling lines. The lines are evenly spaced and run across the width of the page. There are no margins, text, or other markings on the paper.

This image shows a single sheet of white paper with horizontal ruling lines. The lines are evenly spaced and run across the width of the page. There are no margins, text, or other markings on the paper.

Saeco
International Group S.p.A.

Via Torretta, 240
I-40041 Gaggio Montano, Bologna
Tel: + 39 0534 771111

Fax: + 39 0534 31025
www.saeco.com

El fabricante se reserva el derecho de modificar el producto sin aviso previo.

O fabricante reserva-se o direito de efectuar qualquer alteração sem aviso prévio.

© Saeco International Group S.p.A.

Type SUP-032AR Cod.15000747 Rev.00 del 31-07-06